

53 ft 2021 Beneteau Monte Carlo 52, KEDEM Plus

US\$1,675,000 Tax: Paid, United States

Hallandale Beach, Florida, United States



Boat Details

Make:	Beneteau	Class:	Motor Yacht	Cabins:	3
Model:	Monte Carlo 52	Hull Material:	Fiberglass	Berths:	6
Year:	2021	Drive Type:	Pod Drive	Heads:	2
Length:	53 ft 8 in	Beam:	15 ft	Fuel Type:	Diesel
Price:	US\$1,675,000	Boat Location:	Hallandale Beach, Florida, United States	Max Speed:	28 kn
Condition:	Used	Name:	KEDEM Plus		



Manuel Ocampo | ROYAL MARINE YACHT GROUP

3120 NW 99th Court, Miami, Florida, United States

Tel: **3056101031**

info@royalmarine.net

www.royalmarine.net

Description

Available now! The new Monte Carlo 52 marks the introduction of Beneteau's second generation of high-end luxury yachts. She offers incredibly well-used spaces, and an enormous flybridge. Aside from her beautiful design by the talented Nuvolari-Lenard duo, she inherits many characteristics inspired from the Italian shipbuilder, Monte Carlo Yachts.

- Beneteau Manufacturer Warranty until December 2023
- Seakeeper Gyroscopic Stabilizer
- Hydraulic Swim Platform w/ Integrated Dinghy Chalks
- Washer & Dryer
- Cummins Onan 11KW Generator with 250 hours
- Twin Volvo IPS D6 650 480hp w/Joystick Control (Engine Warranty until December 2025) 215 hours on the engines
- IPS Joystick Controls for Lower & Upper Helms
- 3 Cabin and 2 Head Layout
- New Crew Quarters with head and A/C (aft)
- Rear Docking Station
- Zipwake Automatic Trim Tabs
- Grill on Flybridge
- Retractable Electric Sun Awning in Cockpit
- Life Raft
- Bow Sun Pad and Shade Sails

Information & Features

2021 Volvo D6 IPS 650 (Engine 1)

Type:	Inboard	Drive Type:	Pod Drive	Propeller Material:	Bronze
Fuel Type:	Diesel	Power:	480 hp		
Hours:	215	Propeller Type:	4 Blade		

2021 Volvo D6 IPS 650 (Engine 2)

Type:	Inboard	Power:	480 hp
Fuel Type:	Gas/Petrol	Propeller Type:	4 Blade
Hours:	215	Propeller Material:	Bronze

Dimensions

LOA:	53 ft 7 in	Min Draft:	3 ft 11 in
LWL:	47 ft		
Beam:	15 ft		

Weights

Dry Weight:	33,034 lb
-------------	------------------

Outside Equipment/Extras

- Teak Cockpit
- Cockpit Shower
- Tender
- Liferaft
- Cockpit Cushions
- Cockpit Table
- Swimming Ladder

Additional Equipment

- Joystick Control

Manufacturer Provided Description

The new Monte Carlo 52 is elegant, luxurious and contemporary, but also spacious and bright. She will introduce the "Smart Luxury" generation of high-end cruisers by BENETEAU.

Exterior Design

A flybridge powerboat, she has inherited the superb genetic makeup of a highly successful range: a very distinctive contemporary design with an elegant profile, wonderfully designed spaces and special attention to detail. The Monte Carlo 52 takes these great strengths one step further. Her line is more contemporary and her profile more slender, and she is extremely spacious.

Interior Design

The very large saloon, like the newly reorganized spaces of the flybridge, the extensive owner suite, the three cabins and two shower rooms unfold to reveal a voluntarily minimalist décor of lightcoloured woodwork and linings, which is bang on trend.

Salon

Headroom: 1,92 m / 6'4"

- 4-6 seater sofa upholstered in "Bolt Alabaster" fabric
- 2 seats facing sofa, upholstery "Bolt Alabaster" fabric
- Textured and laquered folding wooden table
- Pre-wiring for 40" TV
- Atoll audio system, Bose 2.1 speakers
- 1 220 V Power outlet, 2 USB sockets
- 3 Storage lockers (to port)

Galley

Headroom: 2 m / 6'7"

- Stainless steel sink with mixer tap
- 3 burner induction stove
- Corian Rain Cloud countertop
- Refrigerator with 3 drawers - Freezer - Ice maker (215 L / 57 US Gal)
- Cutlery & glasses storage
- Double trash can
- Lacquer finished furniture
- 2 Cupboards with storage baskets
- Microwave oven (40 L / 11 US Gal)
- 2 220 V Power outlets

Accommodations - Owner's Cabin

Headroom: 1,90 m / 6'3"

- Full beam cabin
- Double berth (1,90 m x 1,60 m / 6'3" x 5'3")
- Marine mattress with bed base
- Padded bed headboard
- 2 Bedside tables with drawer
- 1 Separate walk-in wardrobe
- Direct and indirect LED lighting
- 2 220 V Power outlets
- 2 Panoramic portholes in the hull with integrated opening portholes, fitted with metallic grey Venetian blinds
- Pre-wiring for 32" TV
- Atoll audio system, Bose 2.1 speakers
- Storage cupboards (port and starboard)
- 2 Drawers beneath bunk for storage
- Desk or dressing table
- 5 USB charging sockets

Accommodations - Owner's Head

Headroom: 1,90 m / 6'3"

- Electric toilet TECMA + shared rigid holding tank (120 L / 32 US Gal)
- Separated shower stall with stainless steel profiled doors
- Shower with mixer tap
- Teak decked flooring, black joints
- Basin with recessed mixer tap
- Mirror and storage space
- Automatic shower water drainage (by gravity, towards a reserve plug 50 L / 13 US Gal)
- 1 220 V Power outlet
- Opening hull porthole with metallic grey Venetian blind

Accommodations - VIP Cabin

Headroom: 1,93 m / 6'4"

- 1 Double berth (1,90 m x 1,50 m / 6'3" x 4'11") or two simple beds (sliding system)
- Marine mattress with bed base
- Padded bed headboard
- 2 Opening hull portholes with metallic grey Venetian blinds
- Long natural light wells, with opening deck hatch, fitted blinds and mosquito screens
- 2 Illuminated wardrobes with hanging locker and shelving
- Mirror
- Pre-wiring for 22" TV
- Atoll audio system, Fusion speakers
- Storage
- 2 220 V Power outlets
- Direct and indirect LED lighting
- 4 USB charging sockets

Accommodations - VIP Head

Headroom: 1,95 m / 6'5"

- Electric toilet TECMA + shared rigid holding tank (120 L / 32 US Gal)
- Separated shower stall with stainless steel profiled doors
- Shower with mixer tap
- Basin with recessed mixer tap
- Mirror and storage space
- Automatic shower water drainage (by gravity, towards a reserve plug 50 L / 13 US Gal)
- 1 Opening hull porthole with metallic grey Venetian blind
- 1 Skylights
- 1 Towel rail
- 1 220 V Power outlet

Accommodations - Guest Cabin

Headroom: 1,98 m / 6'6"

- 2 Single beds (1,90 m x 0,70 m / 6'3" x 2'4") or 1 double berth
- Marine mattresses
- Padded bed headboards
- 1 Opening hull porthole with metallic grey Venetian blind
- 1 Bed head with drawer and reading light
- 1 Hanging locker with lighting and mirror
- 1 220 V Power outlet
- 2 USB charging sockets

Engines

Pods propulsion:

- Volvo 2 x IPS 650 - 2 x D6 480 CV/HP Diesel (2 x 350 kW) EVC-E
- Fuel filter with decanter
- Sea water filter
- Air intakes on the deck for engine compartment cooling
- Hot air extraction forced by electric ventilators
- Engine room foam soundproofed
- Fire extinguishing system activated from the steering station (wheelhouse & flybridge)
- Stainless steel fuel fill
- 2 x 650 L / 172 US Gal Aluminum fuel tanks

Steering system:

- Electric steering
- 2 Outdrives with counter rotating propellers ("Jackshaft")
- IPS joystick control (wheelhouse & flybridge)
- Bow thruster double station

Softs Volvo:

- Trip computer
- Cruise control
- Single lever
- Low speed

Electrical

- Ship control + Battery switch remote control
- 24 V 220 V Electrical panel
- 8 AGM Batteries (4 engine batteries: 50 Amp + 4 service batteries: 140 Amp) - NEW June 2023
- Radio-controlled wireless switches (without battery)
- 1 63 Ah - 230 V/50 Hz shore power socket with 15 m cable (or 2 220 V/60 Hz shore power sockets according to country)
- 2 Bilge pumps: 2 electric
- 1 Extinguisher
- Inverter: 24 V / 12 V
- Load balancer
- Battery charger: 24 V - 60 Amp
- 220V Sockets: in salon, galley, heads and cabins
- USB sockets: in salon, galley, heads and cabins
- 12V Power outlet at steering stations (wheelhouse and flybridge)
- 11,5 kVA Generator
- Direct and indirect LED lighting (internal and external)
- Glendinning cable master system

Plumbing

- 2 Rotomolded water tanks, 2 x 200 L / 2 x 53 US Gal
- Stainless steel water fill
- Water pump for pressurizing hot/cold water system
- 60 L / 16 US Gal water heater working off engine heat exchanger (220 V)
- Solenoid valve for transfer between the 2 tanks
- Deck washdown pump
- Shore freshwater supply

Lounge Trim Package

- Flybridge searchlight
- Underwater lights
- ZIPWAKE automatic trim system
- Aft camera
- Garmin Fantom Radar
- Garmin AIS
- 65 L / 17 US Gal refrigerator on flybridge
- Life Raft

Accommodations - Crew Cabin

Headroom: 1,63 m / 5'4"

- Single bed (1,90 m x 0,65 m / 6'3" x 2'2")
- WC TECMA
- Water washbasin with hot and cold water mixer tap under pressure
- Shower
- 1 Opening porthole
- A/C
- Storage for fenders

Interior Layout

- Exhaust fan in galley
- Dishwasher for 6 sets
- Washer / dryer, in the crew cabin
- Washer / dryer
- Extra Tropicale chilled water air conditioning - 72 000 BTU (in wheelhouse: 24 kBTU, in the owner owner's cabin and the head compartment: 24 kBTU, in the VIP cabin and guest cabin: 24 kBTU); Distribution by ceilings
- 6 kBTU air conditioning in the marine cabin
- Water heater system
- Heating in the marine cabin
- Central vacuum system
- Mosquito screens (cabins & aft window door)

Exterior

- Mooring kit: Delta anchor 25 kg + Chain (12 mm diameter; length 40 m) + Line (22 mm diameter; length 50 m) + 4 Moorings lines (18 mm diameter; length 15 m) + 6 Fenders (250 mm diameter; length 0,7 m)
- Electric awning
- Graphite Aft cockpit enclosure
- Outside wheelhouse curtains in "sunworker" black
- Teak floor, on flybridge
- Teak floor, catwalks
- Flybridge bimini Graphite with Built-in LED lighting
- Metallic grey painted flybridge arch
- Cockpit table convertible into sun-bathing area
- "Kenyon" electric grill, in flybridge
- Foredeck Cushions and Sail Shades

Additional Information

ELECTRICAL SYSTEM

- Inverter (2 KVA)

ENGINE - NAVIGATION INSTRUMENTS

- 3rd control joystick in the cockpit
- Seekeeper NG6 gyroscopic stabilizer

ELECTRONIC

- Engine compartment camera
- Dummy satellite antenna

Disclaimer

Engine and generator hours are as of the date of the original listing and are a representation of what the listing broker is told by the owner and/or actual reading of the engine hour meters. The broker cannot guarantee the true hours. It is the responsibility of the purchaser and/or his agent to verify engine hours, warranties implied or otherwise and major overhauls as well as all other representations noted on the listing brochure.

The Company offers the details of this vessel in good faith but cannot guarantee or warrant the accuracy of this information nor warrant the condition of the vessel. A buyer should instruct his agents, or his surveyors, to investigate such details as the buyer desires validated. This vessel is offered subject to prior sale, price change, or withdrawal without notice.











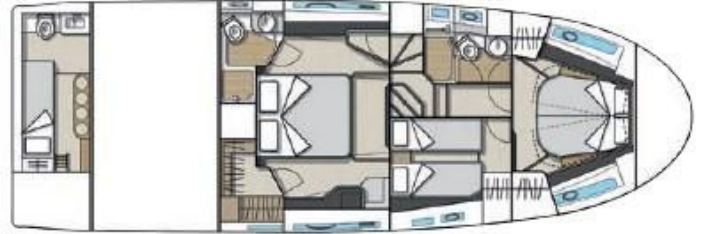




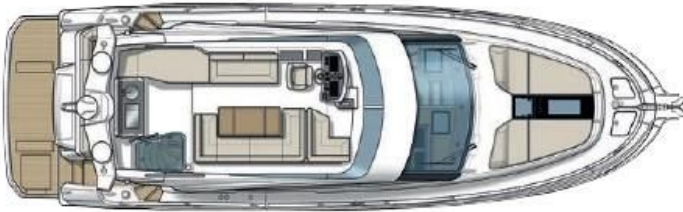








LOWER DECK WITH SKIPPER CABIN
PONT INFÉRIEUR AVEC CABINE SKIPPER



FLYBRIDGE - FLYBRIDGE



MAIN DECK - PONT SUPÉRIEUR

PERFORMANCES - VOLVO 2 x 480 CV

VOLVO IPS 650 - 2 X 480 CV (HP)						
Caractéristiques techniques						
2 moteurs Inboard / 2 in board engine : 2 x IPS 650 - 06 480 CV HP Diesel (2x357 kW) EPC-E						
Hélice 4 pales / Propeller : 4 blades : 136						
Déplacement total du bateau testé / Total displacement of boat tested: 19 580 kg / 43 025 lbs						
Régime en tours par minute ou tableau de bord / RPM on instrument panel	Vitesse en nœuds moyenne au radar / Average speed on the radar in knots	Consommation en litres par heure / consumption in liter per hour	Rendement / Efficiency (NM/L)	Consommation totale en USGal / heure Total consumption in GPH	Rendement / Efficiency (NM/USGal)	Autonomie en NM (avec réserve 80%) /Range in NM (with 20% fuel supply)
600	3,4	3,0	1,18 NM	0,8 USGal	4,3 NM	1179 NM
1500	8,0	20,0	0,40 NM	5,3 USGal	1,5 NM	416 NM
2000	9,8	39,0	0,26 NM	10,8 USGal	1,0 NM	261 NM
2500	12,8	71,0	0,18 NM	18,8 USGal	0,7 NM	187 NM
2800	16,2	85,0	0,18 NM	23,2 USGal	0,7 NM	191 NM
3000	18,0	107,0	0,17 NM	28,8 USGal	0,6 NM	175 NM
3200	20,5	122,0	0,17 NM	32,2 USGal	0,6 NM	175 NM
3500	24,6	144,0	0,17 NM	36,0 USGal	0,6 NM	178 NM
3700	26,6	161,0	0,17 NM	42,8 USGal	0,6 NM	172 NM
3850	28,7	184,0	0,16 NM/8	46,6 USGal	0,6 NM	162 NM