

50 ft 2014 Prestige 500 Flybridge, Legacy  
**US\$699,000**  
 Saint Petersburg, Florida, United States



**Boat Details**

|            |                      |                |   |            |                  |
|------------|----------------------|----------------|---|------------|------------------|
| Make:      | <b>Prestige</b>      | Class:         | <b>Flybridge</b>                                | Heads:     | <b>3</b>         |
| Model:     | <b>500 Flybridge</b> | Hull Material: | <b>Fiberglass</b>                               | Fuel Type: | <b>Diesel</b>    |
| Year:      | <b>2014</b>          | Beam:          | <b>14 ft 10 in</b>                              | Max Draft: | <b>3 ft 5 in</b> |
| Length:    | <b>50 ft</b>         | Boat Location: | <b>Saint Petersburg, Florida, United States</b> |            |                  |
| Price:     | <b>US\$699,000</b>   | Name:          | <b>Legacy</b>                                   |            |                  |
| Condition: | <b>Used</b>          | Cabins:        | <b>4</b>  |            |                  |



**Manuel Ocampo | ROYAL MARINE YACHT GROUP**

3120 NW 99th Court, Miami, Florida, United States

Tel: **3056101031**

info@royalmarine.net

www.royalmarine.net

## Description

2014 50' Prestige Flybridge "Legacy" for sale.

The Prestige 500 features an exquisite luxurious modern design and is nicely equipped with both upper and lower helms powered by twin Volvo Penta IPS 600's. The 500 Flybridge with its sleek profile lines and panoramic views, will impress. Recent exterior updates, fresh services, New Turbos, New Pod Seals, New Heat Exchangers, Intercoolers Cleaned, and all-around well cared for, this boat is turn key and ready for it's next adventure.

Easy to view in St. Petersburg, FL. Call today to schedule a private viewing!

Tender not included in Sale however the owner is willing to sell it!

## Information & Features

### 2014 Volvo Penta D6 (Engine 1)

Fuel Type: **Diesel**  
Hours: **855**  
Power: **435 hp**

### 2014 Volvo Penta D6 (Engine 2)

Fuel Type: **Diesel**  
Hours: **855**  
Power: **435 hp**

### Dimensions

LOA: **49 ft 1 in**  
Beam: **14 ft 10 in**  
Max Draft: **3 ft 5 in**

### Tanks

Fuel: **344 gal**  
Fresh Water: **168 gal**  
Holding: **35 gal**

### Accommodations

Cabins: **4**  
Heads: **3**

## **Notable Features**

- New Bimini Top
- Recent Teak Sanding and Cleaning
- All New Exterior Upholstery and Covers
- New Window Tint
- New Seals on Pods
- New Turbos
- Heat Exchangers and Inner Coolers Cleaned
- Refinished cockpit and flybridge teak table

## **Standard Features Include**

- Three Private Staterooms w/Two Heads
- Private Entrance to Seaview Owners Suite
- Three TV's - Master, Guest, and Salon
- Slatted Teak Wood Floor in Cockpit
- Slatted Teak Wood Floor on Swim Platform
- Cockpit Shower (Hot/Cold Water)
- Lateral Electric Windows in Salon
- Extra Large Flybridge w/ Sunpad
- Flybridge Galley, BBQ Grill and Fridge

## Factory Installed Options Include

### Trim Level Excellence Package:

- Forward Sunpad
- Mattress w/Cover
- Cockpit Bench Cover
- Inverter 24V
- Electric Trim Tabs
- Glendinning Cable Management System
- TV Antenna
- Bose Acoustimass Audio System (Salon)
- Wooden Floor in Salon & Carpet
- Luxury Bed Cover Set (3 Cabins)
- Dock Water Inlet
- Generator 13.5kw
- Cooktop 4 Burners
- Mattress Battens in Forward & AFT cabins

### Electronics Package:

- Raymarine Multifunction GPS Screen E125 & E127
- Raymarine E125 on Fly Bridge
- VHF Dual Station 260E
- ECI-100 Engine Interface & EV-2 Auto Pilot for IPS
- HD Digital Radar
- Mooring Kit
- Anchoring Kit
- Stainless Steel Bow Protector
- Retractable Electric Sun Awning
- Cockpit Protection Cover
- Fly Bridge Covers
- Bimini on Fly Bridge
- Foredeck Bimini
- Hydraulic Swim Platform
- Fender Storage Basket - Forward Pulpit
- Teak Cockpit Table
- Window Curtains - External Bronze
- Bow Thruster
- Electric Seawater Pump for Deck Washing
- Deck Searchlight
- Ice Maker

- Combo Washer/Dryer
- Tropical A/C - Skipper Cabin
- Chilled Water Tropical A/C
- Skipper Cabin
- Electric Safe
- Oasis Carpet - Salon & Cabins
- Additional Removeable Carpet
- IPS Joystick Control - Cockpit
- Bose Acoustimass 3 Audio System
- RayMarine 260E VHF Dual Station
- Porthole - Mosquito Screens
- Teak Floor - Flybridge
- Wood Floor - Salon

### **Dealer Installed Options Include**

- KVH Satellite TV
- Matching Dummy Dome
- Dark Carpet replaced White Carpet

### **Color**

- Exterior Color - White with Champagne Bootstripe
- Interior - Dark Moabi Wood
- Upholstery Salon - Mediterranean White

### **disclaimer**

The Company offers the details of this vessel in good faith but cannot guarantee or warrant the accuracy of this information nor warrant the condition of the vessel. A buyer should instruct his agents, or his surveyors, to investigate such details as the buyer desires validated. This vessel is offered subject to prior sale, price change, or withdrawal without notice.

#### **Mechanical Disclaimer**

Engine and generator hours are as of the date of the original listing and are a representation of what the listing broker is told by the owner and/or actual reading of the engine hour meters. The broker cannot guarantee the true hours. It is the responsibility of the purchaser and/or his agent to verify engine hours, warranties implied or otherwise and major overhauls as well as all other representations noted on the listing.

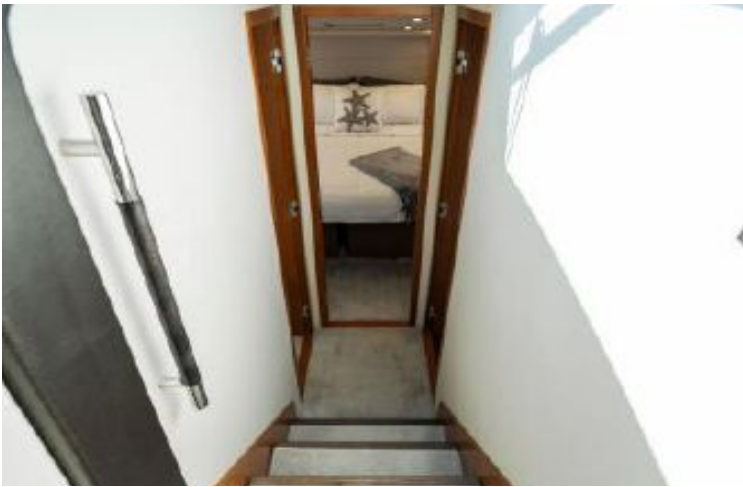
X





























50 ft 2017 Azimut 50 Flybridge, Field Office

**US\$1,100,000**

Delray Beach, Florida, United States



### Boat Details

|            |                      |                |   |            |                   |
|------------|----------------------|----------------|---|------------|-------------------|
| Make:      | <b>Azimut</b>        | Class:         | <b>Flybridge</b>                            | Berths:    | <b>6</b>          |
| Model:     | <b>50 Flybridge</b>  | Hull Material: | <b>Fiberglass</b>                           | Heads:     | <b>2</b>          |
| Year:      | <b>2017</b>          | Beam:          | <b>15 ft 3 in</b>                           | Fuel Type: | <b>Diesel</b>     |
| Length:    | <b>50 ft</b>         | Boat Location: | <b>Delray Beach, Florida, United States</b> | Max Draft: | <b>4 ft 11 in</b> |
| Price:     | <b>US\$1,100,000</b> | Name:          | <b>Field Office</b>                         |            |                   |
| Condition: | <b>Used</b>          | Cabins:        | <b>1</b>                                    |            |                   |



**Manuel Ocampo | ROYAL MARINE YACHT GROUP**

3120 NW 99th Court, Miami, Florida, United States

Tel: **3056101031**

[info@royalmarine.net](mailto:info@royalmarine.net)

[www.royalmarine.net](http://www.royalmarine.net)

## Description

The only 'FRESH WATER' 50' Fly on the Market! Conveniently moved to South Florida from Lake Erie to SELL! Call today, this the cleanest 50' Azimut you will see.

- Winter storage for 7 months of the year in temperature controlled environment
- Fly bridge cushions new 6/23
- Stamoid covers 6/23
- Complete buff/wax 6/23
- AC compressor 6/22

## Information & Features

### 2017 Volvo Penta D11 670HP (Engine 1)

|            |                |        |               |
|------------|----------------|--------|---------------|
| Type:      | <b>Inboard</b> | Power: | <b>670 hp</b> |
| Fuel Type: | <b>Diesel</b>  |        |               |
| Hours:     | <b>429</b>     |        |               |

### 2017 Volvo Penta D11 670HP (Engine 2)

|            |                |        |               |
|------------|----------------|--------|---------------|
| Type:      | <b>Inboard</b> | Power: | <b>670 hp</b> |
| Fuel Type: | <b>Diesel</b>  |        |               |
| Hours:     | <b>429</b>     |        |               |

### Dimensions

|            |                   |
|------------|-------------------|
| LOA:       | <b>50 ft</b>      |
| Beam:      | <b>15 ft 3 in</b> |
| Max Draft: | <b>4 ft 11 in</b> |

### Weights

|             |                  |
|-------------|------------------|
| Dry Weight: | <b>40,000 lb</b> |
|-------------|------------------|

### Tanks

|              |                    |
|--------------|--------------------|
| Fuel:        | <b>1 x 581 gal</b> |
| Fresh Water: | <b>1 x 156 gal</b> |
| Holding:     | <b>1 x 46 gal</b>  |

### Accommodations

|                |          |        |          |
|----------------|----------|--------|----------|
| Single Berths: | <b>2</b> | Heads: | <b>2</b> |
| Double Berths: | <b>2</b> |        |          |
| Cabins:        | <b>1</b> |        |          |

### Electrical Equipment

- Generator: Cummins Onan 17kW/625 hours

### Outside Equipment/Extras

- Tender

## Highlights

- Twin Volvo Penta D11-670 mHp 670HP each
- Cummins Onan 17kW Generator
- SeaKeeper Gyro Stabilizer
- Teak Hydraulic Swim Platform
- XENTA Joystick Docking
- Tropical AC Upgrade - 60,000 BTU with Upgraded Thru Hulls and Sea Strainers - (New AC 2022)
- Teak Flooring
- LED Lighting
- Teak Cockpit Table
- Cockpit Refrigerator
- Cockpit Ice maker
- Raymarine Gold Package
- Additional SeaKeeper Control Station
- Dark Oak Wood Interior
- SAT TV
- Lighting Dimmers
- Hi-Lo Television System
- Convertible Ottoman
- Pullout Couch in Salon
- Love Seat in Salon
- Washer-Dryer Unit
- C-Shaped Sofa on Flybridge Aft
- Flybridge Hardtop
- Flybridge Sink
- Flybridge Refrigerator
- Floodlights on Flybridge
- Air-Conditioned Crew Quarters
- Glendenning Cable Master
- Automatic Fire Fighting System
- Double Racor Filters for Main Engines

## Exterior

- Teak Hydraulic Swim Platform
- LED lighting
- Anchor Chain
- Fender Locker
- Stainless Steel Cleats
- Bow Sunpad with Seating
- Chain Washing Pump

## Cockpit

- Teak Flooring
- Tak Cockpit Table
- Cockpit Refrigerator
- LED Lighting
- (2) Stainless Steel, Plexiglass Gates
- (2) Stainless Steel Cleats
- (2) Handrails
- Mooring Station
- Stainless Steel, Double Door to Main Cabin
- C-Shaped Bench with Storage
- Bench Cushions
- Engine Room Access
- Flybridge Access Stairs
- (2) Speakers
- Spotlight Lighting
- Hot/Cold Shower Head

## Helm/Electronics

- XENTA Joystick Docking Controls
- Co-Pilot Helm Seat
- Raymarine Gold Package
- Additional SeaKeeper Control Station (Flybridge)
- Twin Raymarine A127 Displays
- Raymarine Ray260 VHF
- P70R Autopilot
- 4kW Open Array 48" Color Radar

### LOWER HELM ELECTRONICS:

- Bronze Series Electronic Navigation Instruments
- Cruise Control
- Magnetic Compass
- Trim Tab Switches/Indicators
- Horn
- Navigational Lights
- Wiper Switches
- Bilge Pump Controls
- Water Tank Controls
- Engine Room Ventilation
- 12V Socket
- Shore Power Socket Indicator Light
- Chain Wasing Pump Controls
- Fuel Gauge
- Water Level Gauge
- Engine Control Switches

### FLYBRIDGE HELM/ELECTRONICS:

- (1) Engine Display
- Helm Seating
- Bronze Series Electronic Navigation Instruments
- Engine Control Switches
- Bow Anchor Winch Controls
- Horn Controls
- Trim Tab Controls
- 12V Socket
- Chain Meter Counter
- Adjustable Steering Wheel

## Salon

- Dark Oak Wood Interior
- Tropical AC Upgrade - 60,000 BTU with Upgraded Thru Hulls and Sea Strainers
- Lighting Dimmers
- SAT TV
- Hi-Lo Television System
- Convertible Ottoman
- Pullout Couch
- Love Seat
- LED Lighting
- Carpeted Floor
- Cupboards
- C-Shaped Sofa (Starboard)
- Roman Blinds on Door
- (2) Speakers

## Dinette

- Carpeted Floor
- Foldable Dinette Table

## Galley

- Laminate Flooring and Countertop
- Overhead Extraction Hood
- Microwave
- Grill
- Stainless Steel Sink
- Refrigerator
- Upright Freezer
- Openable Portlight

## Lower Companionway

- Carpeted Floor
- Grabrails

## Master Stateroom

- Washer/Dryer Unit
- Full Beam
- Full-Size Berth with Headboard
- (2) Nightstands
- Vanity with Mirror
- (2) Cabinets with Doors and Shelves
- (2) Wardrobes
- Spotlights
- (2) Openable Portlights
- Rectangular Hull Windows
- Private Access to Master Head
- Metal Venetian Blinds
- Air Conditioning System Control Panel
- Provision for TV System
- 220V Sockets

## Master Head

- Private Access to Master Stateroom
- Separate Shower Enclosure
- Flat Shower Door
- Chromed Shower Rail
- Cabinet with Shelves
- Spotlights
- (1) Openable Portlight
- Metal Venetian Blinds
- Air Extractor
- TECMA Toilet



## **VIP/Bow Stateroom**

- Foldaway Full-Size Berth with Locker Under
- Wooden Headboard
- (2) Openable Wall Units
- (2) Wardrobes
- Spotlights
- Emergency Exit in Ceiling to Bow Area
- Direct Access to Guest Head
- Carpeted Floor
- 220V Sockets
- Air Conditioning System Control Panel

## **Guest Head (Port)**

- Private Access to VIP/Bow Stateroom
- Separate Shower Enclosure with Glass Door
- Chromed Shower Rail
- Spotlights
- Cabinet with Shelves
- Metal Venetian Blinds
- Head Air Extractor
- Openable Round Portlight
- Socket

## **Starboard Stateroom**

- Two Twin Berths (Bunks)
- Nightstand
- Wardrobe with Shelves
- Lockers Under Berth
- (1) Openable Portlight
- Metal Venetian Blinds
- Carpeted Floor
- Spotlights
- Air Conditioning System Control Panel

## Flybridge

- C-Shaped Sofa
- Hardtop
- LED Lighting
- Sink
- Refrigerator
- Floodlights
- Grill
- Non-Slip Floor
- Watertight Aluminum/Plexiglass Access Door
- Stainless Steel Handrail
- Fore Sunbed Area
- Upper Helm Station
- High Gloss Teak Table
- Storage Locker

## Crew Quarters

- Air-Conditioned Crew Quarters located at Stern
- Access from Cockpit Bench
- Single Bed with Storage Under
- (1) Wall Unit
- (1) Wardrobe
- (1) Head Cabinet
- Openable Portlight
- Spotlights
- Fabric Blind

## Crew Quarters Head

- TECMA Toilet
- White Sink
- Chrome Mixer with Extractable Shower Head
- Shower Area with Curtain
- Vanity with Mirror
- Power Socket

## Engine Room

- Twin Volvo Penta D11-670 mHp 670HP each
- Cummins Onan 17kW Generator
- SeaKeeper Gyro Stabilizer
- Glendennig Cable Master
- Automatic Fire Fighting System

## Additional Features

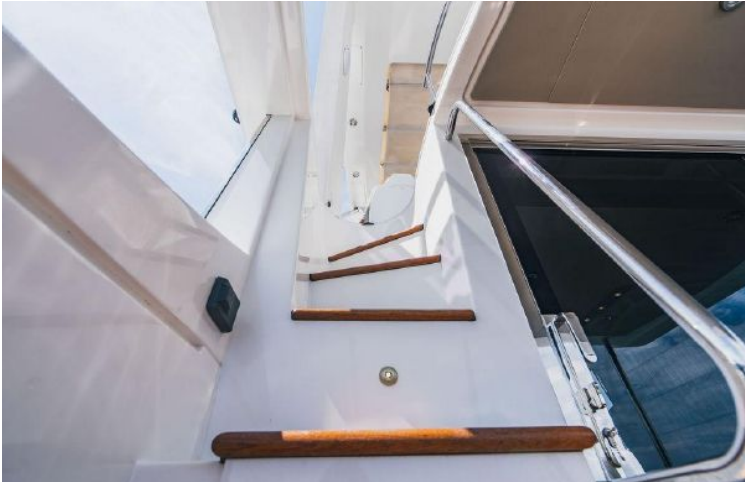
- Double Racor Filters for Main Engines
- Shore Power Sockets
- AC Sockets
- Engine Sockets
- 24V Battery Charger
- 12V Battery Charger
- Bilge System
- Bilge System Alarms
- Fire Extinguishing System
- Suel System
- Fuel Gauge
- Single Setting Filters for Engines
- Remote Diesel Shut-Off
- Fresh Water System
- Water Heater
- Water Pressure Pump
- Hot/Cold Water Line
- Toilet Fresh Water Supply
- Fresh Water Toilet Flushing
- Black Water System
- Gray Water System
- Seawater System
- Head Ventilation

## Disclaimer

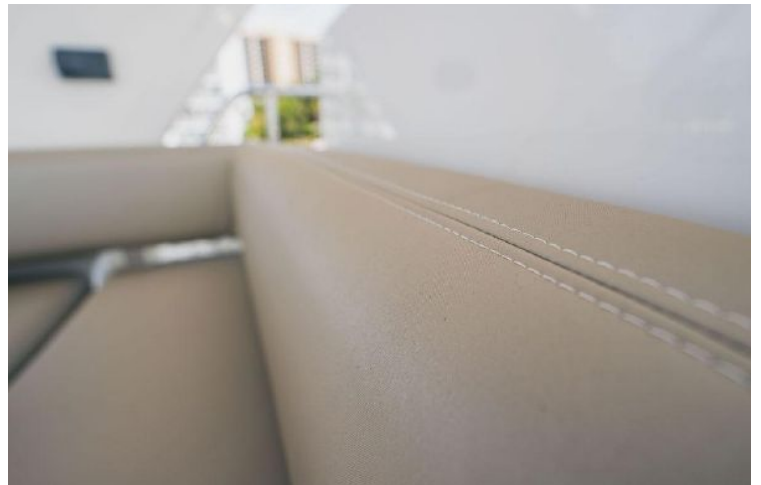
The Company offers the details of this vessel in good faith but cannot guarantee or warrant the accuracy of this information nor warrant the condition of the vessel. A buyer should instruct his agents, or his surveyors, to investigate such details as the buyer desires validated. This vessel is offered subject to prior sale, price change, or withdrawal without notice.







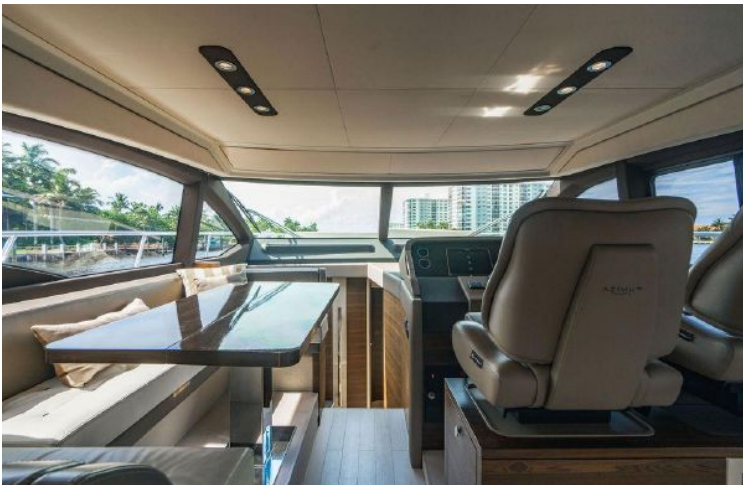




























50 ft 2021 Galeon 500 Fly, Mangogo

US\$1,499,000

Miami, Florida, United States



**Boat Details**

|            |                      |                |                                      |            |                  |
|------------|----------------------|----------------|--------------------------------------|------------|------------------|
| Make:      | <b>Galeon</b>        | Class:         | <b>Flybridge</b>                     | Cabins:    | <b>3</b>         |
| Model:     | <b>500 Fly</b>       | Hull Material: | <b>Fiberglass</b>                    | Heads:     | <b>3</b>         |
| Year:      | <b>2021</b>          | Drive Type:    | <b>V Drive</b>                       | Fuel Type: | <b>Diesel</b>    |
| Length:    | <b>50 ft</b>         | Beam:          | <b>14 ft 5 in</b>                    | Max Draft: | <b>4 ft 7 in</b> |
| Price:     | <b>US\$1,499,000</b> | Boat Location: | <b>Miami, Florida, United States</b> |            |                  |
| Condition: | <b>Used</b>          | Name:          | <b>Mangogo</b>                       |            |                  |



**Manuel Ocampo | ROYAL MARINE YACHT GROUP**

3120 NW 99th Court, Miami, Florida, United States

Tel: **3056101031**

[info@royalmarine.net](mailto:info@royalmarine.net)

[www.royalmarine.net](http://www.royalmarine.net)

## Description

### 2021 Galeon 500 Fly - New on the market!!!

- In pristine condition, fully loaded;
- Professional maintained by Yacht management company (all service/warranty records);
- 100% private (No charters);
- Second Owner;
- Low Volvo D-11 V-Drive engines (250) and generator (560) hours;
- Easy to schedule a showing;
- JET SKI NOT INCLUDED

## Information & Features

### 2021 Volvo Penta D11 (Engine 1)

|             |                |        |               |
|-------------|----------------|--------|---------------|
| Type:       | <b>Inboard</b> | Power: | <b>670 hp</b> |
| Hours:      | <b>250</b>     |        |               |
| Drive Type: | <b>V Drive</b> |        |               |

### 2021 Volvo Penta D11 (Engine 2)

|            |                |             |                |
|------------|----------------|-------------|----------------|
| Type:      | <b>Inboard</b> | Drive Type: | <b>V Drive</b> |
| Fuel Type: | <b>Diesel</b>  | Power:      | <b>670 hp</b>  |
| Hours:     | <b>250</b>     |             |                |

### Dimensions

|                 |                   |            |                  |
|-----------------|-------------------|------------|------------------|
| LOA:            | <b>53 ft 2 in</b> | Max Draft: | <b>4 ft 7 in</b> |
| Length On Deck: | <b>47 ft 5 in</b> |            |                  |
| Beam:           | <b>14 ft 5 in</b> |            |                  |

### Weights

|             |                  |
|-------------|------------------|
| Dry Weight: | <b>50,155 lb</b> |
|-------------|------------------|

### Tanks

|              |                |
|--------------|----------------|
| Fuel:        | <b>475 gal</b> |
| Fresh Water: | <b>171 gal</b> |

### Accommodations

|         |          |
|---------|----------|
| Cabins: | <b>3</b> |
| Heads:  | <b>3</b> |

### Other

|                   |                      |
|-------------------|----------------------|
| Flag Of Registry: | <b>United States</b> |
|-------------------|----------------------|

## **Electronics**

- Depthsounder
- Radar
- Log-Speedometer
- Repeater(s)
- TV Set
- Navigation Center
- Autopilot
- Radio
- Compass
- GPS
- Cockpit Speakers
- VHF

## **Inside Equipment**

- Seakeeper
- Bow Thruster
- Electric Bilge Pump
- Microwave Oven
- Air Conditioning
- Electric Head
- Hot Water
- Refrigerator
- Fresh Water Maker
- Battery Charger

## **Outside Equipment/Extras**

- Teak Cockpit
- Cockpit Table

## **Electrical Equipment**

- Shore Power Inlet
- Generator
- Inverter

## Manufacturer Provided Description

The award-winning Galeon 500 Fly is the most innovative yacht in its class. With all the luxury and craftsmanship that Galeon is known for, the 500 Fly offers ingeniously unique features that make it an incredible investment in your boating lifestyle. With its unique “beach mode”, the cockpit width extends to a stunning 20 feet by dropping down both the port and starboard coaming sides.

The bow rest area comes with an expansive C-shape seating area for additional entertainment space. Up top, the sizable flybridge is fitted with a wet bar, sundecks and a second helm station for easier maneuvering. With a powerful hydraulic swim platform available, you can choose to transport a variety of engaging water paraphernalia. From the ample flybridge to the large staterooms, the Galeon 500 Fly is engineered to please and excite even the most demanding yacht aficionado while providing an awe inspiring experience for family and friends.

The main deck reveals a closely linked saloon and cockpit areas with a flush floor and sliding side windows. Serve refreshments straight from the galley or even set up an outside bar to your guests amazement. A bright interior of the saloon is also fitted with leisure and dining areas as well as a functional helm station with great visibility. With powerful Volvo engines in an inboard V-drive configuration and available high-tech electronics and navigation equipment, the 500 FLY provides comfort and reliable for all of your adventures.

Down below, three cabins and two bathrooms await the passengers for a total of six berths. The master cabin, located midship, offers a double bed, large wardrobe and a private bathroom. Offer your guests the bow VIP cabin for spectacular night views thanks to a series of skylights. All quarters offer standing height and have access to natural light. The sumptuous master stateroom is the ideal space for privacy at the end of a day full of socializing and adventure.

## Disclaimer

The Company offers the details of this vessel in good faith but cannot guarantee or warrant the accuracy of this information nor warrant the condition of the vessel. A buyer should instruct his agents, or his surveyors, to investigate such details as the buyer desires validated. This vessel is offered subject to prior sale, price change, or withdrawal without notice.





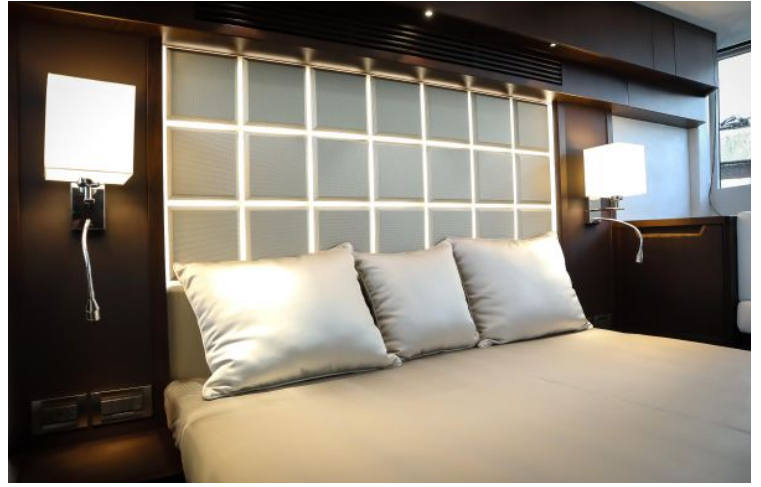
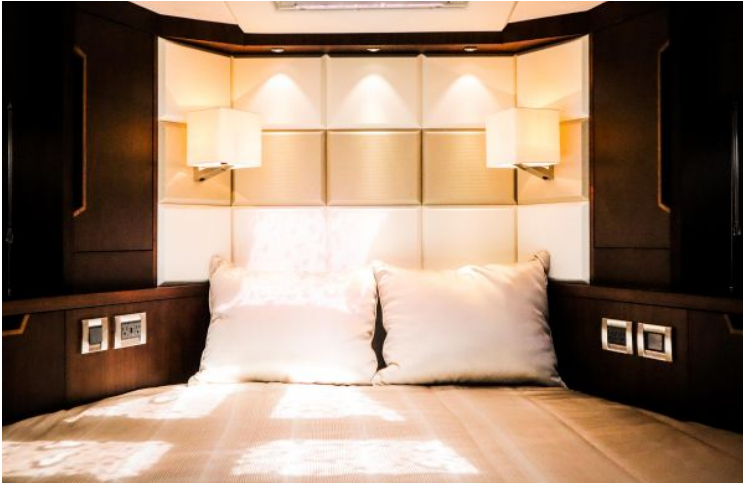














50 ft 2019 Azimut 50 Flybridge

US\$1,055,000

Davie, Florida, United States



**Boat Details**

|            |                      |                |                                      |            |                   |
|------------|----------------------|----------------|--------------------------------------|------------|-------------------|
| Make:      | <b>Azimut</b>        | Class:         | <b>Flybridge</b>                     | Heads:     | <b>2</b>          |
| Model:     | <b>50 Flybridge</b>  | Hull Material: | <b>Fiberglass</b>                    | Fuel Type: | <b>Diesel</b>     |
| Year:      | <b>2019</b>          | Beam:          | <b>15 ft 2 in</b>                    | Max Draft: | <b>4 ft 10 in</b> |
| Length:    | <b>50 ft</b>         | Boat Location: | <b>Davie, Florida, United States</b> |            |                   |
| Price:     | <b>US\$1,055,000</b> | Cabins:        | <b>3</b>                             |            |                   |
| Condition: | <b>Used</b>          | Berths:        | <b>6</b>                             |            |                   |



**Manuel Ocampo | ROYAL MARINE YACHT GROUP**

3120 NW 99th Court, Miami, Florida, United States

Tel: **3056101031**

[info@royalmarine.net](mailto:info@royalmarine.net)

[www.royalmarine.net](http://www.royalmarine.net)

## Description

### 2019 Azimut 50 Joystick With Shaft - WE TAKE TRADES

- 780 Hours On The Upgraded 725HP Twin Volvo D11-725
- Volvo Joystick (Shaft Drive)
- Bow Thruster
- Fly Bridge Bimini Top
- 3 Stateroom Layout
- Satellite TV
- Hydraulic Swim Platform with Teak
- Upgraded Teak Package
- Seakeeper 9
- Storage in lieu of Crew Quarter

#### Advanced package includes:

- Chain Counter For Anchor
- Decor Upgrade
- Double Racor Filters Main Engines
- Electric Mooring Winches In Cockpit
- Miele Appliances

Call us for more info. WE ACCEPT TRADES.

## Information & Features

### Volvo D11-725 (Engine 1)

|            |                |        |               |
|------------|----------------|--------|---------------|
| Type:      | <b>Inboard</b> | Power: | <b>725 hp</b> |
| Fuel Type: | <b>Diesel</b>  |        |               |
| Hours:     | <b>780</b>     |        |               |

### Volvo D11-725 (Engine 2)

|            |                |        |               |
|------------|----------------|--------|---------------|
| Type:      | <b>Inboard</b> | Power: | <b>725 hp</b> |
| Fuel Type: | <b>Diesel</b>  |        |               |
| Hours:     | <b>780</b>     |        |               |

### Dimensions

|            |                   |
|------------|-------------------|
| LOA:       | <b>52 ft 9 in</b> |
| Beam:      | <b>15 ft 2 in</b> |
| Max Draft: | <b>4 ft 10 in</b> |

### Speed

|                 |              |
|-----------------|--------------|
| Cruising Speed: | <b>26 kn</b> |
|-----------------|--------------|

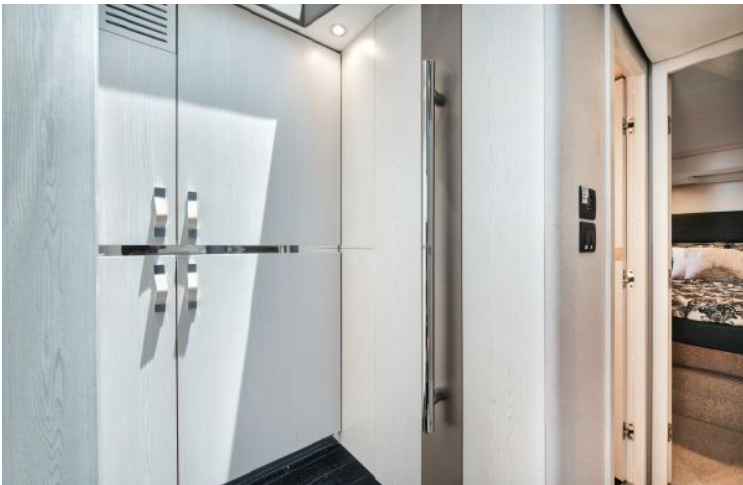




## Disclaimer

The Company offers the details of this vessel in good faith but cannot guarantee or warrant the accuracy of this information nor warrant the condition of the vessel. A buyer should instruct his agents, or his surveyors, to investigate such details as the buyer desires validated. This vessel is offered subject to prior sale, price change, or withdrawal without notice.















51 ft 2015 Sea Ray 510 Fly, Poseidon

**US\$899,000**

Tampa, Florida, United States



**Boat Details**

|            |                    |                |                                      |            |               |
|------------|--------------------|----------------|--------------------------------------|------------|---------------|
| Make:      | <b>Sea Ray</b>     | Class:         | <b>Flybridge</b>                     | Heads:     | <b>2</b>      |
| Model:     | <b>510 Fly</b>     | Hull Material: | <b>Fiberglass</b>                    | Fuel Type: | <b>Diesel</b> |
| Year:      | <b>2015</b>        | Beam:          | <b>15 ft 4 in</b>                    |            |               |
| Length:    | <b>51 ft</b>       | Boat Location: | <b>Tampa, Florida, United States</b> |            |               |
| Price:     | <b>US\$899,000</b> | Name:          | <b>Poseidon</b>                      |            |               |
| Condition: | <b>Used</b>        | Cabins:        | <b>3</b>                             |            |               |



**Manuel Ocampo | ROYAL MARINE YACHT GROUP**

3120 NW 99th Court, Miami, Florida, United States

Tel: **3056101031**

info@royalmarine.net

www.royalmarine.net

## Description

This 2015 Sea Ray 510 Fly "Poseidon" is a great opportunity to own a 100% turnkey, captain-maintained motor yacht. The owner has found his next yacht and is motivated for this yacht to be enjoyed by the next owner. The 510 Fly shines above its competition with highly functional social zones and crowd-pleasing features to keep you and your guests at full-smile. SkyFlow Design circulates light and air throughout the boat. The galley, salon and cockpit combine like an indoor/outdoor great room, and the expansive bridge layout is the icing on the cake. Hosting is easy in such an environment. And then when the pace has slackened, a full-beam master suite breathes peace into every weekend getaway.

Notable Features:

- Upgrade Raymarine Axiom Electronics
- Zeus Pods replaced 2019
- Joystick docking
- New exterior upholstery and foam
- New Wave wi-fi and KVH tracvision
- New upgraded Audio/Video
- Captain maintained

## Information & Features

### Cummins ZEUS 600 QSC (Engine 1)

|            |                |        |               |
|------------|----------------|--------|---------------|
| Type:      | <b>Inboard</b> | Power: | <b>600 hp</b> |
| Fuel Type: | <b>Diesel</b>  |        |               |
| Hours:     | <b>655</b>     |        |               |

### Cummins ZEUS 600 QSC (Engine 2)

|            |                |        |               |
|------------|----------------|--------|---------------|
| Type:      | <b>Inboard</b> | Power: | <b>600 hp</b> |
| Fuel Type: | <b>Diesel</b>  |        |               |
| Hours:     | <b>655</b>     |        |               |

### Dimensions

|            |                   |
|------------|-------------------|
| LOA:       | <b>51 ft</b>      |
| Beam:      | <b>15 ft 4 in</b> |
| Min Draft: | <b>4 ft 2 in</b>  |

### Weights

|             |                  |
|-------------|------------------|
| Dry Weight: | <b>46,800 lb</b> |
|-------------|------------------|

### Tanks

|              |                |
|--------------|----------------|
| Fuel:        | <b>500 gal</b> |
| Fresh Water: | <b>130 gal</b> |
| Holding:     | <b>68 gal</b>  |

## Accommodations

Cabins: **3**

Heads: **2**

## Notable Features

- Upgrade Raymarine Axiom Electronics
- Zeus Pods replaced 2019
- Joystick docking
- New exterior upholstery and foam
- New Wave wi-fi and KVH tracvision
- New upgraded Audio/Video
- Captain maintained

## 510 Fly Features

- Zeus Propulsion with joystick control
- Luxurious full-beam master stateroom with multiple configurations
- Standard three-stateroom layout and two full heads, each with separate showers
- Social zone design with galley up and featuring continuous cockpit / salon interaction
- Standard, fully complemented, upper & lower helm stations
- Expansive bridge layout with multiple seating, lounging and dining areas

## Hull & Deck Features

- Bottom Paint
- Bow Rail, 316 Stainless Steel with Welded Stanchions
- Intermediate Rails & Life Lines
- Cleats, Thru-Bolted - Stainless Steel (8)
- Deck Fill Plates, Stainless Steel
- Deck Rails, 316 Stainless Steel
- Gel Coat, Arctic White
- Graphics, Striping
- Handrails, 316 Stainless Steel
- Hatch, Deck Vent - Translucent with Locks & Sky Screen Cover
- Hull Windows, Smoked Acrylic
- Lights, Navigation
- Portlights (2, Opening)
- Resin, High-Performance Vinylester
- Rub Rail, PVC with Stainless-Steel Insert
- Storage, Transom Wall (For Lines & Gear)
- Swim Platform, Integral/Extended with Concealed Stainless-Steel with Four-Step Swim Ladder with Integral Grab Handle
- Thru-Hull Fittings, Stainless Steel
- Vent System, Engine Room - Integral
- Windshield, Bridge Venturi
- Windshield, Tempered/Tinted Curved Glass

## Sunbrella Canvas

- Bridge Seats & Console Covers
- Cockpit Seat Covers

## Certifications

- Meets Applicable USCG & ABYC Standards
- NMMA Certification

## Mooring System

- Anchor, Stainless
- Anchor Chute, Stainless Steel
- Anchor Rope/Chain Storage with Gas-Assisted Hatches
- Anchor Washdown Spigot
- Windlass, Rope/Chain with Foot Switches

## Flybridge

- Beverage Holders
- Console Glove Box
- Handrails, 316 Stainless Steel
- Hatch, Sliding Bridge Access
- Lighting, Indirect LED
- Outlet, 12V Accessory
- Outlet, 120V GFI Protected
- Radar Arch
- Refrigerator, 120V
- Seating, Helm
- Seating, Convertible with Storage Below
- Ship's Bell
- Sunpad
- Table, Fiberglass - Aft

## Cockpit

- Beverage Holders
- Door, Frameless Cabin Entry with Stainless Steel Accents & Tempered/Tinted Glass (Sliding & Lockable)
- Door, Transom
- Floor Liner, Self-Bailing Fiberglass
- Handrails, 316 Stainless Steel
- Lazarette with Dedicated Line & Fender Stowage
- Lighting, LED - White
- Outlet, 120V GFI Protected
- Seating, Aft Bench
- Steps, Boarding (Molded-In)
- Steps, Exterior Bridge Access w/Stainless-Steel Handrail & Storage Below

## Cabin

- Carbon Monoxide Monitors
- Carpet, 100% Stainmaster®
- Curtains, Custom
- Doors, Wood
- Handrails, Stainless Steel
- Lighting, 12V Indirect - LED
- Outlets, 12V Accessory
- Outlets, 120V GFI Protected
- Outlet & Switch Plates - Polished Nickel Finish
- Pillows, Accent
- Shades, Fabric Day/Night with Drape Trim
- Storage, In-Floor
- Wood Cabinetry: Walnut
- Window Treatment: Silver Alloy Blinds

## Salon

- Control Station - Lower Helm with Single Stidd Helm Seat
- Entertainment Center: Gaming System Port, iPod® Interface with Docking Station, MP3 Port with USB, 12V Outlet, Stereo - 12V AM/FM, Wireless Bluetooth™, SiriusXM® Satellite Receiver with Antenna, Amplifier, Subwoofer, Speakers (4), Digital Cockpit Remote Control & Speaker Selector Switches
- Storage Cabinet - CD & DVD
- TV, 50" LED / Smart with Remote Blu-ray™ Player
- Seating, Sofa - Opposing
- Storage Cabinets
- Table, Folding Wood

## Galley

- Coffeemaker, Keurig®
- Countertop, Solid Surface w/Sink, Faucet & Sink Cover
- Flooring, Wood
- Freezer with Icemaker & Stainless Steel Front - 120V
- Microwave/Convection Oven with Stainless-Steel Front - 120V
- Power Vent, 12V
- Refrigerator with Stainless-Steel Front - Dual Voltage (120V/12V)
- Storage, Drawers
- Storage, Galley Pantry
- Stove, Two-Burner - 240V
- Trash Receptacle

## Master Stateroom (full beam, mid-ship)

- Bed, Queen Size with Innerspring Mattress, Pillows, Sheets, Coordinated Spreads & Drawer Storage Below
- Door, Privacy with Full-Length Mirror
- Dressers - Port & Starboard
- Flooring, Carpet
- Headboard, Lattice Style
- Mirrored Hanging Locker, Cedar Lined with Light
- TV, 32" LED / Smart with Remote Blu-ray™ Player

## Master Stateroom Head

- Door, Access from Master Stateroom
- Flooring, Tile
- Handrails, Stainless Steel
- Head, VacuFlush®
- Power Vent, 12V
- Robe Hook, Head Door
- Shower with Adjustable Shower Wand & Acrylic Door
- Storage, Medicine Cabinet - Mirrored
- Towel Bar
- Towels - Sea Ray
- Vanity with Solid-Surface Countertop, Sink, Faucet & Storage Below

## Forward Stateroom

- Bed, Queen-Size with Innerspring Mattress, Pillows, Sheets, Coordinated Spread & Storage
- Door, Privacy
- Door, Access to Fwd Head/Shower
- Flooring, Carpet
- Hanging Lockers, Mirrored and Cedar Lined with Light
- Storage, Lower Cabinet

## Forward Stateroom Head

- Door, Access from Companionway
- Flooring, Tile
- Handrails, Stainless Steel
- Head, VacuFlush®
- Power Vent, 12V
- Robe Hook, Head Door
- Shower with Adjustable Shower Wand & Acrylic Door
- Storage, Medicine Cabinet - Mirrored
- Towel Bar
- Towels - Sea Ray
- Vanity with Solid-Surface Countertop, Sink, Faucet & Storage Below

## Guest Stateroom

- Convertible Twin Beds, Pillows, Sheets, Coordinated Spreads & Storage Below
- Door, Privacy
- Flooring, Carpet
- Hanging Locker, Cedar Lined with Light
- Mirror
- Storage, Drawers

## Air Conditioning and Heating

- Zone-Controlled Reverse-Cycle System, 240V (40,000 BTU)
- Custom Integral Vent System



## Bridge Control Station

- Alarms, High Water - Bilge & Cabin
- Battery Parallel Start System - Engines
- Compass
- Dash, Gel Coated
- Electronic Throttle & Shift Controls (ETS)
- Horn, Air - 12V
- Instrument Panel
- SmartCraft® Diagnostics: Instrumentation, Custom Sea Ray® SmartCraft with Low-Glare Blue Night Lighting & Chrome Bezels, 4-in-1 Multigauges (2) (Includes: Fuel Level, Oil Pressure, Voltmeter & Water Temperature), Tachometers (2)
- SmartCraft VesselView Display:
- Propulsion: Engine Hour Meters, Engine Status, Performance & Fuel, Peak Performance, Boost Pressure (Optional), Troll Control & Cruise Control
- Vessel: Vessel Status, Tank Status, Steering Position & Generator Data
- Environment & Navigation: GPS Interface, Depth & Water Temperature, Depth Alerts, Trip Log Information, Fuel to Waypoint Data & Navigation Data, Active Alarms/Details, Alarm History/Details
- Steering, Power Assisted Hydraulic with Tilt Wheel
- Switch Panel, Backlit
- Switches, Illuminated Weatherproof Rockers & Electronic Dimmer Control

## Electronics (bridge)

- Electronics Circuit, 12V/50 Amp
- VHF Radio with Remote Speaker & 8' Fiberglass Antenna

## Lower Control Station

- Alarms, High Water - Bilge & Cabin
- Battery Parallel Start System - Engines
- Compass
- Dash, Gel Coated
- Defroster
- Electronic Throttle & Shift Controls (ETS)
- Horn, Air - 12V
- Instrument Panel - High Gloss
- SmartCraft® Diagnostics: Instrumentation, Custom Sea Ray® SmartCraft with Low-Glare Blue Night Lighting & Chrome Bezels, 4-in-1 Multigauges (2) (Includes: Fuel Level, Oil Pressure, Voltmeter & Water Temperature), Tachometers (2)
- SmartCraft Digital Throttle & Shift (DTS)
- SmartCraft VesselView Display:
- Propulsion: Engine Hour Meters, Engine Status, Performance & Fuel, Peak Performance, Boost Pressure (Optional), Troll Control & Cruise Control
- Vessel: Vessel Status, Tank Status, Steering Position & Generator Data
- Environment & Navigation: GPS Interface, Depth & Water Temperature, Depth Alerts, Trip Log Information, Fuel to Waypoint Data & Navigation Data, Active Alarms/Details, Alarm History/Details
- Steering, Power Assisted Hydraulic with Tilt Wheel
- Switch Panel, Backlit - High Gloss
- Switches, Illuminated Weatherproof Rockers & Electronic Dimmer Control
- Windshield Wipers with Wiper Controls

## Electronics (lower)

- Electronics Circuit, 12V/50 Amp
- Upgraded Raymarine® Axiom 12" Chartplotter
- VHF Radio with Remote Speaker & 8' Fiberglass Antenna

## Electrical Systems

- Batteries, 8-D Type with Trays
- Battery Charger/Converter, 120V/60 Amp/12V
- Battery Solenoid Switches, 12V (3)
- Cable Television System with Inlet, TV Shore Cord, Coax Outlets, Gain Control & Omni Directional Antenna Enclosure, Weatherproof Main Solenoid
- Panel, Circuit Breaker - Remote
- Panel, DC Main Breaker
- Panel, Main Distribution - AC
- Panel, Main Distribution - DC
- Shore Power, Cablemaster™ (Glendinning) 240V/50 Amp with 75' Cord & Wireless Remote (Cablemaster N/A w/220V/50 Cycle Shore Power)
- Shore Power, Additional Inlet - 120V/50 Amp with 75' Cord and 6kva Transformer
- Transformer, Shore Power Isolation - 240V/50 Amp
- Wiring, Color-Coded with Chafe Protection

## Engine Room

- T-Zeus-Cummins QSC 8.3 - 600 HO (T-574 hp - 428 kW)
- Bilge Pumps, 12V Automatic
- Bilge Pumps, 12V Automatic High-Water
- Blowers, 12V Bilge (2)
- Fire Suppression System - Automatic with Diesel Shutdown, Override & Manual Pull
- Gel-Coated Engine Room
- Insulation, Engine Room - 2" with Loaded Vinyl Barrier
- Ladder, Stainless Steel - Removable
- Lighting, 12V

## Fuel System

- Diesel Fuel System - Electric with Transfer Pump
- Fuel Filters, Remote (Racor®)
- Fuel Lines, USCG - Type A-1
- Fuel Tanks, Aluminum w/Manual Shut-Off Valves & Sending Units

## Generator

- 17 kW Onan® - Diesel (120V/240V/60 Cycle) with Sound Shield, Remote Start, Muffler, Closed Cooling, Fuel Filter, Seacock & Seawater Strainer

## Underwater Gear

- Propellers, Stainless Steel
- Trim Tabs, Hydraulic (Integrated with Zeus Pod Drives)

## Waste System

- Common Drain System
- Head System (VacuFlush®)
- Holding Tank Level Indicators - MDP
- Holding Tank with Dockside Pump-Out (68 Gallon)
- Sump Box with Automatic Pump & Hinged Service Lid

## Freshwater System

- Freshwater Washdown Spigots with Hoses - Transom, Engine Room & Anchor Locker
- Pressure Water System with 12V Pump & Charcoal Filtration System
- Shower, Cockpit - Single-Lever Hot & Cold w/Stainless-Steel Door, Braided Hose & Ergonomic Shower Wand
- Water Heater, 240V (20 Gallon)
- Water Inlet, Dockside
- Water Manifold System

## disclaimer

The Company offers the details of this vessel in good faith but cannot guarantee or warrant the accuracy of this information nor warrant the condition of the vessel. A buyer should instruct his agents, or his surveyors, to investigate such details as the buyer desires validated. This vessel is offered subject to prior sale, price change, or withdrawal without notice.

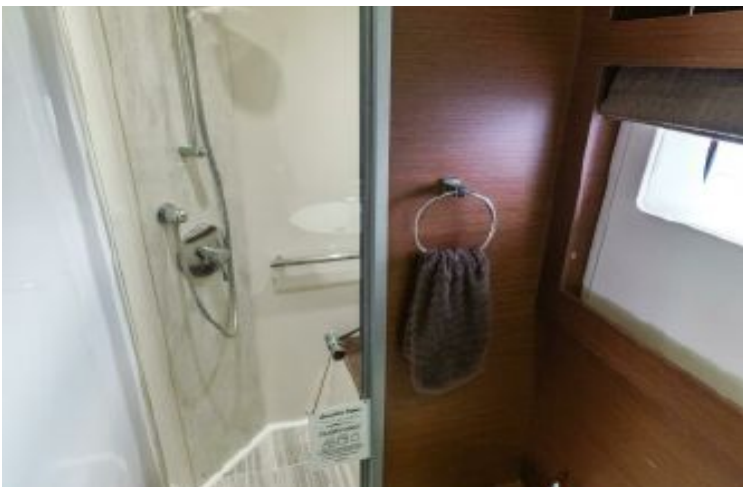
### Mechanical Disclaimer

Engine and generator hours are as of the date of the original listing and are a representation of what the listing broker is told by the owner and/or actual reading of the engine hour meters. The broker cannot guarantee the true hours. It is the responsibility of the purchaser and/or his agent to verify engine hours, warranties implied or otherwise and major overhauls as well as all other representations noted on the listing.

X

























52 ft 2019 Cranchi E 52S Evoluzione

**US\$995,000**

Fort Myers, Florida, United States



### Boat Details

|            |                         |                |   |            |                  |
|------------|-------------------------|----------------|---|------------|------------------|
| Make:      | <b>Cranchi</b>          | Class:         | <b>Flybridge</b>                          | Heads:     | <b>2</b>         |
| Model:     | <b>E 52S Evoluzione</b> | Hull Material: | <b>Fiberglass</b>                         | Fuel Type: | <b>Diesel</b>    |
| Year:      | <b>2019</b>             | Drive Type:    | <b>Pod Drive</b>                          | Max Speed: | <b>30 kn</b>     |
| Length:    | <b>52 ft</b>            | Beam:          | <b>15 ft 3 in</b>                         | Max Draft: | <b>4 ft 1 in</b> |
| Price:     | <b>US\$995,000</b>      | Boat Location: | <b>Fort Myers, Florida, United States</b> |            |                  |
| Condition: | <b>Used</b>             | Cabins:        | <b>3</b>                                  |            |                  |



**Manuel Ocampo | ROYAL MARINE YACHT GROUP**

3120 NW 99th Court, Miami, Florida, United States

Tel: **3056101031**

info@royalmarine.net

www.royalmarine.net



## Description

3 STATEROOM LAYOUT WITH AFT FULL-BEAM MASTER SUITE

FRESHWATER ONLY - 1 OWNER, LOW HOURS!

En Route from Chicago to South West Florida

Consider a different point of view. Consider the E52S Evoluzione, a yacht with an elegant profile and coupé-like lines, which functions like a flybridge. Hop on the Sportbridge and govern your E52S from the innovative glass cockpit.

## Information & Features

### Volvo Penta D8/800 (Engine 1)

|            |                |             |                  |
|------------|----------------|-------------|------------------|
| Type:      | <b>Inboard</b> | Drive Type: | <b>Pod Drive</b> |
| Fuel Type: | <b>Diesel</b>  | Power:      | <b>550 hp</b>    |
| Hours:     | <b>290</b>     |             |                  |

### Volvo Penta D8/800 (Engine 2)

|            |                |             |                  |
|------------|----------------|-------------|------------------|
| Type:      | <b>Inboard</b> | Drive Type: | <b>Pod Drive</b> |
| Fuel Type: | <b>Diesel</b>  | Power:      | <b>550 hp</b>    |
| Hours:     | <b>290</b>     |             |                  |

### Dimensions

|                       |                    |            |                  |
|-----------------------|--------------------|------------|------------------|
| LOA:                  | <b>51 ft 11 in</b> | Max Draft: | <b>4 ft 1 in</b> |
| Beam:                 | <b>15 ft 3 in</b>  |            |                  |
| Max Bridge Clearance: | <b>17 ft 7 in</b>  |            |                  |

### Weights

|             |                  |
|-------------|------------------|
| Dry Weight: | <b>43,541 lb</b> |
|-------------|------------------|

### Speed

|                 |                |
|-----------------|----------------|
| Cruising Speed: | <b>24 kn</b>   |
| Max Speed:      | <b>30 kn</b>   |
| Range:          | <b>240 nmi</b> |

### Seating

|                 |           |
|-----------------|-----------|
| Max Passengers: | <b>12</b> |
|-----------------|-----------|

### Tanks

|              |                |
|--------------|----------------|
| Fuel:        | <b>415 gal</b> |
| Fresh Water: | <b>142 gal</b> |
| Holding:     | <b>50 gal</b>  |

### Accommodations

|         |          |
|---------|----------|
| Cabins: | <b>3</b> |
| Heads:  | <b>2</b> |

## **Electrical Equipment**

- Shore Power Inlet
- Generator

## **Electronics**

- Radar
- TV Set
- DVD Player
- Autopilot
- Radio
- Compass
- CD Player
- GPS
- Cockpit Speakers
- VHF

## **Inside Equipment**

- Bow Thruster
- Electric Bilge Pump
- Marine Head
- Air Conditioning
- Heating
- Hot Water
- Battery Charger

## **Outside Equipment/Extras**

- Tender
- Cockpit Cushions
- Swimming Ladder

## **Additional Equipment**

- Joystick Control

## Features and Options

- Volvo Penta DPS digital anchor
- Ultramarine Stainless Steel Anchor kg35
- TV SAT/45 Antenna
- CTOS Turning Control with Volvo Penta engine interface
- Additional Pilot Station Starboard Cockpit
- Scuba Lights (4)
- Bow Lights
- RGB Interior Lights and Courtesy in Saloon
- Hydraulic Swim Platform
- Shadow Line on Side Glasses
- Sport Bridge Pilot Station with Glass Cockpit Instruments, Joystick Driving, 2 Seats, Sunbathing Cushions, Stainless steel and teak access ladder, Covers for Sunbathing Cushion, Driving Seats, Glass Cockpit
- Teak Laid Cockpit
- Engine and Stern Room Camera
- Stern Sunshade Awning
- Stern Winches
- Bow Thruster
- Ivory Oak Wood Interior
- Oak Staves Flooring Throughout
- High Gloss Cockpit Table
- Glenn dening electric shore power cord
- Lights on the side deck rails blue
- Aft Cabin in anti scratch plastic wood effect
- Storage for Stern Anchor
- Reading light and Air Conditioning control near the heard
- Extra socket in the cabin
- Anti-Fouling Bottom Paint
- Air Conditioning
- Bow bimini top
- Aft Cabin with Shower
- ATOS gliding trim tabs with Volvo Penta engine interface
- Search Light
- Ice-maker
- Vacuu Flush toilet with electric controls
- Combi Oven with microwave Miele
- Additional 100L refrigerator in Galley
- Leather Sofas
- Radio CD/USB/MP3 + DVD in VIP, Guest, Salon and Master Cabins

- Radar
- Blinds for front/side windows
- Bilge micro suction system
- Waste water tank
- Electronic Safe
- 15kw Generator
- Water Distribution System directly from the dock
- Grey Water tank for shower drains with electric pump
- Acoustic and Visual High Water Alarm
- Anchor with Chain
- Volvo Penta anti Corrosion kit
- Automatic autoclave pump
- Hot Water Heater
- 40 AH Automatic battery-charger
- New Generation trim tabs Interceptor
- Dashboard with magnetic compass, digital engine instruments, Volvo Glass cockpit
- Bow sunbathing cushion and sofa, speakers and radio control
- Double fuel fill
- Aft cockpit sofa
- Aft and bow shower warm/cold
- Echo-sounder (temperature-depth) integrated in the plotter instruments
- Filters with fuel/water separator
- Galley refrigerator with freezer
- Colour cartographics GPS + antenna
- Electric System 24V/DC 230V/AC
- Joystick Driving
- Stainless steel anchor protection
- Wood Flooring in living room and galley
- Cooktop in glass-ceramics
- Automatic pilot
- Electric bilge pumps
- Saloon door
- 50Ah / 230V Shore power and marine shore power cable
- Stereo Radio FM/AM USB with boxes in cockpit
- Stainless steel foldaway swimming ladder
- Joystick control system, trip computer, single lever, cruise control
- Emergency electronic and manual Battery switches
- Teak laid swim platform
- Teak laid steps

- Salon, cabin and bathroom curtains
- Widescreen wipers with electric washer
- Electronic steering and electronic engine controls

## **Disclaimer**

The Company offers the details of this vessel in good faith but cannot guarantee or warrant the accuracy of this information nor warrant the condition of the vessel. A buyer should instruct his agents, or his surveyors, to investigate such details as the buyer desires validated. This vessel is offered subject to prior sale, price change, or withdrawal without notice.

















52 ft 2018 Prestige 520, Aura  
**US\$935,000 Tax: Paid, United States**  
 Miami Beach, Florida, United States



### Boat Details

|            |                    |                |  |            |               |
|------------|--------------------|----------------|--|------------|---------------|
| Make:      | <b>Prestige</b>    | Class:         | <b>Flybridge</b>                           | Cabins:    | <b>3</b>      |
| Model:     | <b>520</b>         | Hull Material: | <b>Fiberglass</b>                          | Berths:    | <b>5</b>      |
| Year:      | <b>2018</b>        | Drive Type:    | <b>Pod Drive</b>                           | Heads:     | <b>2</b>      |
| Length:    | <b>52 ft 10 in</b> | Beam:          | <b>14 ft 8 in</b>                          | Fuel Type: | <b>Diesel</b> |
| Price:     | <b>US\$935,000</b> | Boat Location: | <b>Miami Beach, Florida, United States</b> | Max Speed: | <b>26 kn</b>  |
| Condition: | <b>Used</b>        | Name:          | <b>Aura</b>                                |            |               |



**Manuel Ocampo | ROYAL MARINE YACHT GROUP**

3120 NW 99th Court, Miami, Florida, United States

Tel: **3056101031**

info@royalmarine.net

www.royalmarine.net

## Description

"Aura" 2018 520 Prestige is ready for her new owner. This vessel has been well-maintained by the owner and has low engine hours. "Aura" was in freshwater before moving to her current home in Miami, FL.

### FEATURES:

Joystick Controls

Flybridge Wetbar

Raymarine Electronics

Salon Home Cinema System

Unveiling the Exquisite 2018 Prestige 520 Fly Yacht: A Luxurious Journey on the High Seas

### Introduction:

Welcome to a world of unparalleled luxury and elegance. We are thrilled to present to you the 2018 Prestige 520 Fly Yacht—a stunning masterpiece that combines cutting-edge technology, exceptional craftsmanship, and unparalleled comfort. Step aboard this remarkable vessel, and let us take you on a journey of exploration and indulgence.

### Opening Statement:

As you approach the 2018 Prestige 520 Fly Yacht, the first thing that captures your attention is its sleek, contemporary design. This meticulously crafted vessel is a testament to Prestige's commitment to excellence, and it exudes sophistication in every aspect.

### Exterior Features:

The exterior of the 2018 Prestige 520 Fly Yacht is a visual marvel. From its gracefully curved lines to the spacious flybridge, every detail has been thoughtfully designed to provide a harmonious blend of form and function. The expansive sunroof invites an abundance of natural light, while the teak-laid cockpit and swim platform create a luxurious ambiance that is sure to impress your guests.

### Interior Spaces:

Step inside the yacht, and you'll be greeted by an interior that is the epitome of elegance. The open-concept layout seamlessly connects the salon, dining area, and galley, creating a spacious and inviting atmosphere. Impeccably crafted furnishings, high-quality materials, and meticulous attention to detail elevate the onboard experience to new heights.

### Accommodations:

The 2018 Prestige 520 Fly Yacht offers luxurious accommodations for you and your guests. With three sumptuous cabins, including a lavish master suite, every overnight stay will be a restful and indulgent experience. The spacious en-suite bathrooms feature exquisite finishes, while the panoramic windows in each cabin offer breathtaking views of the surrounding seascape.

### Performance and Handling:

Beyond its captivating aesthetics, the 2018 Prestige 520 Fly Yacht delivers an exhilarating performance on the water. Powered by twin Volvo IPS 600 engines, this vessel offers exceptional maneuverability, efficiency, and a smooth cruising experience. Whether you're gliding through calm waters or embracing the thrill of high-speed cruising, the 520 Fly Yacht ensures an unforgettable journey.

### Key Features:

1. Flybridge with wet bar, grill, and spacious seating area.
2. Expansive sunroof for an abundance of natural light.
3. Fully equipped galley with high-end appliances.
4. Luxurious master suite with panoramic windows.
5. Premium sound system and entertainment options.

6. State-of-the-art navigation and control systems.

7. Ample storage space for extended voyages.

Conclusion:

The 2018 Prestige 520 Fly Yacht is a masterpiece of design, engineering, and luxury. From its striking exterior to its opulent interior, every aspect of this vessel has been meticulously crafted to provide an unparalleled yachting experience. Embark on a journey of elegance and adventure, and let the 520 Fly Yacht redefine your expectations of luxury yachting. Contact us today to arrange a personal tour and experience the epitome of maritime opulence.

## Information & Features

### 2018 Volvo IPS 600 (Engine 1)

|            |                |                 |                  |                     |                        |
|------------|----------------|-----------------|------------------|---------------------|------------------------|
| Type:      | <b>Inboard</b> | Drive Type:     | <b>Pod Drive</b> | Propeller Material: | <b>Stainless Steel</b> |
| Fuel Type: | <b>Diesel</b>  | Power:          | <b>435 hp</b>    |                     |                        |
| Hours:     | <b>945</b>     | Propeller Type: | <b>3 Blade</b>   |                     |                        |

### 2018 Volvo IPS 600 (Engine 2)

|            |                |                 |                  |                     |                        |
|------------|----------------|-----------------|------------------|---------------------|------------------------|
| Type:      | <b>Inboard</b> | Drive Type:     | <b>Pod Drive</b> | Propeller Material: | <b>Stainless Steel</b> |
| Fuel Type: | <b>Diesel</b>  | Power:          | <b>435 hp</b>    |                     |                        |
| Hours:     | <b>945</b>     | Propeller Type: | <b>3 Blade</b>   |                     |                        |

### Dimensions

|                 |                    |                       |                   |
|-----------------|--------------------|-----------------------|-------------------|
| LOA:            | <b>52 ft 10 in</b> | Max Bridge Clearance: | <b>18 ft 4 in</b> |
| Length On Deck: | <b>47 ft 6 in</b>  | Min Draft:            | <b>3 ft 5 in</b>  |
| Beam:           | <b>14 ft 8 in</b>  |                       |                   |

### Weights

|             |                  |
|-------------|------------------|
| Dry Weight: | <b>34,346 lb</b> |
|-------------|------------------|

### Speed

|                 |                |
|-----------------|----------------|
| Cruising Speed: | <b>22 kn</b>   |
| Max Speed:      | <b>26 kn</b>   |
| Range:          | <b>210 nmi</b> |

### Tanks

|              |                    |
|--------------|--------------------|
| Fuel:        | <b>2 x 343 gal</b> |
| Fresh Water: | <b>1 x 168 gal</b> |
| Holding:     | <b>1 x 45 gal</b>  |

### Accommodations

|                |          |        |          |
|----------------|----------|--------|----------|
| Single Berths: | <b>1</b> | Heads: | <b>2</b> |
| Double Berths: | <b>2</b> |        |          |
| Cabins:        | <b>3</b> |        |          |

## Other

Hull Shape: **Semi Displacement**  
Designer: **Garroni Design, JP Concepts, Prestige Engineering**

## Covers

- Bimini Top
- Cockpit Cover

## Electrical Equipment

- Shore Power Inlet
- Generator

## Electronics

- Depthsounder
- Radar
- Log-Speedometer
- Wind Speed and Direction
- Repeater(s)
- TV Set
- Navigation Center
- Plotter
- Autopilot
- Radio
- Compass
- CD Player
- GPS
- Cockpit Speakers
- VHF

## Inside Equipment

- Bow Thruster
- Electric Bilge Pump
- Manual Bilge Pump
- Microwave Oven
- Air Conditioning
- Electric Head
- Heating
- Hot Water
- Refrigerator
- Sea Water Pump
- Battery Charger

## Outside Equipment/Extras

- Cockpit Shower
- Tender
- Liferaft
- Cockpit Cushions
- Cockpit Table
- Swimming Ladder

## Additional Equipment

- Joystick Control



## **Manufacturer Provided Description**

This model has inherited the strengths of her predecessor, yet she also features her own innovations. The true PRESTIGE spirit can be felt in this ingenious, top-of-the-line model. In a pure, dynamic style, the PRESTIGE 520 offers multiple zones for relaxing in comfort. First, we have the XXL Flybridge, unique on a motor yacht of 52 feet! Life on board is easy, enhanced by numerous clever details. Conducive to relaxation, the L-shaped saloon includes an immense integrated storage locker. Intensely bright, the inviting saloon evokes a sense of well-being. Facing sofas and a modular cockpit bench seat, which can pivot to face the saloon, create the perfect space for entertaining. Extremely large windows contribute to the soft, warm atmosphere on the interior, while offering unimpeded visibility.

## **Disclaimer**

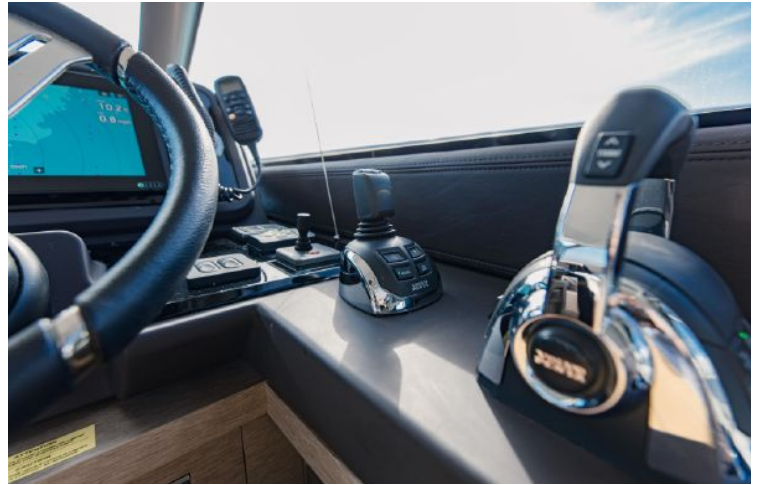
The Company offers the details of this vessel in good faith but cannot guarantee or warrant the accuracy of this information nor warrant the condition of the vessel. A buyer should instruct his agents, or his surveyors, to investigate such details as the buyer desires validated. This vessel is offered subject to prior sale, price change, or withdrawal without notice.



















54 ft 2014 Azimut 54 Flybridge, AMICI

US\$735,000

Stuart, Florida, United States



**Boat Details**

|            |                     |                |                                       |            |                  |
|------------|---------------------|----------------|---------------------------------------|------------|------------------|
| Make:      | <b>Azimut</b>       | Class:         | <b>Flybridge</b>                      | Cabins:    | <b>3</b>         |
| Model:     | <b>54 Flybridge</b> | Hull Material: | <b>Fiberglass</b>                     | Heads:     | <b>2</b>         |
| Year:      | <b>2014</b>         | Drive Type:    | <b>V Drive</b>                        | Fuel Type: | <b>Diesel</b>    |
| Length:    | <b>54 ft</b>        | Beam:          | <b>15 ft 7 in</b>                     | Max Speed: | <b>25 kn</b>     |
| Price:     | <b>US\$735,000</b>  | Boat Location: | <b>Stuart, Florida, United States</b> | Max Draft: | <b>7 ft 3 in</b> |
| Condition: | <b>Used</b>         | Name:          | <b>AMICI</b>                          |            |                  |



**Manuel Ocampo | ROYAL MARINE YACHT GROUP**

3120 NW 99th Court, Miami, Florida, United States

Tel: **3056101031**

info@royalmarine.net

www.royalmarine.net

## Description

**2014 Azimut 54' Flybridge ready for sale NOW!**

**Priced To Sell Quickly**

**Seller Extremely Motivated and Listening To Reasonable Offers Today**

**\*\*NO SeaKeeper\*\* 1,030 HORS \*\* See Below for Updates as of 2019\*\***

**Fresh Bottom Job July 2023**

**Fire Suppression System Re-Certified 2023**

**Propspeed on Propellers and Running Gear**

**\*Reupholstered interior interior salon and dinette cushions 2019**

**\*New Carpeting throughout entire vessel 2019**

**\*New Foam Decking in Flybridge 2020**

**\*New LED 400KW lighting throughout entire vessel to match 2017 Azimut Spec Complete in 2019**

**\*New Ice Machine 2019**

**\*Fusion Radio System and Speakers**

## Information & Features

### MAN R6-730 (Engine 1)

|            |                |                 |                |
|------------|----------------|-----------------|----------------|
| Type:      | <b>Inboard</b> | Drive Type:     | <b>V Drive</b> |
| Fuel Type: | <b>Diesel</b>  | Power:          | <b>730 hp</b>  |
| Hours:     | <b>1030</b>    | Propeller Type: | <b>4 Blade</b> |

### MAN R6-730 (Engine 2)

|            |                |                 |                |
|------------|----------------|-----------------|----------------|
| Type:      | <b>Inboard</b> | Drive Type:     | <b>V Drive</b> |
| Fuel Type: | <b>Diesel</b>  | Power:          | <b>730 hp</b>  |
| Hours:     | <b>1030</b>    | Propeller Type: | <b>4 Blade</b> |

### Dimensions

|                       |                   |            |                  |
|-----------------------|-------------------|------------|------------------|
| LOA:                  | <b>53 ft 8 in</b> | Min Draft: | <b>4 ft 5 in</b> |
| Beam:                 | <b>15 ft 7 in</b> | Max Draft: | <b>7 ft 3 in</b> |
| Max Bridge Clearance: | <b>18 ft</b>      |            |                  |

### Weights

Dry Weight: **56,000 lb**

### Speed

|                 |              |
|-----------------|--------------|
| Cruising Speed: | <b>21 kn</b> |
| Max Speed:      | <b>25 kn</b> |

## Tanks

Fuel: **2 x 300 gal**  
Fresh Water: **156 gal**  
Holding: **38 gal**

## Accommodations

Cabins: **3**  
Heads: **2**

## Other

Flag Of Registry: **United States**  
Builder: **Azimut**

## Additional Equipment

- Joystick Control

## Exclusions

- Owner's Personal Belongings Not Included

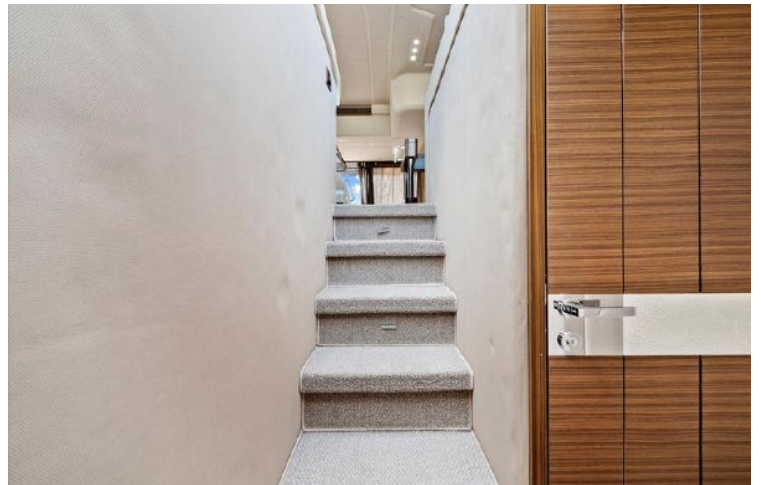
## Mechanical Disclaimer

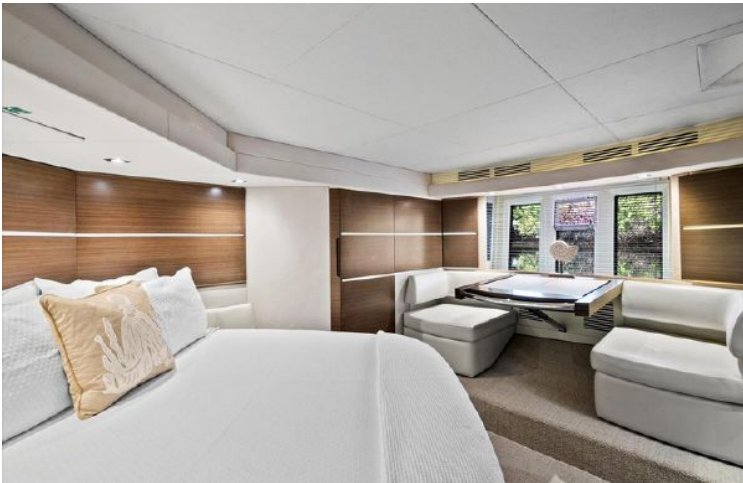
Engine hours are as of the date of the original listing and are a representation of what the listing broker is told by the owner and/or actual reading of the engine hour meters. The broker cannot guarantee the true hours. It is the responsibility of the purchaser and/or his agent to verify engine hours, warranties implied or otherwise and major overhauls as well as all other representations noted on the listing brochure.

## Disclaimer

The company offers the details of this vessel in good faith but cannot guarantee or warrant the accuracy of this information nor warrant the condition of the vessel. A buyer should instruct his agents, or his surveyors, to investigate such details as the buyer desires validated. This vessel is offered subject to prior sale, price change or withdrawal without notice.









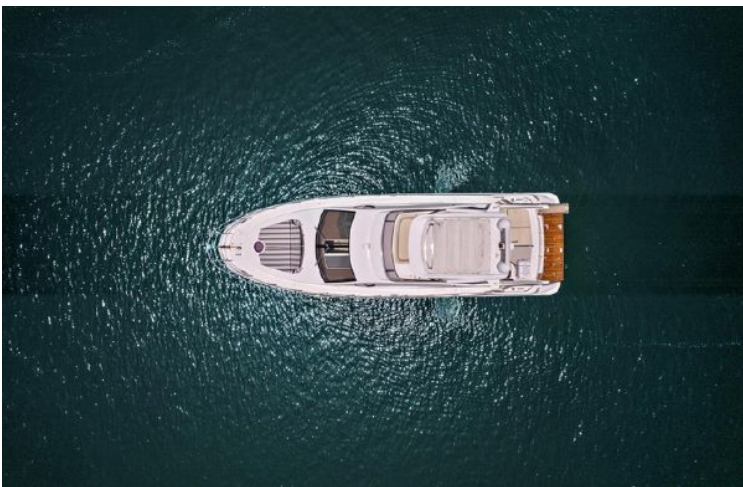














55 ft 2019 Azimut Flybridge 55  
**US\$1,395,000**  
 Fort Lauderdale, Florida, United States



**Boat Details**

|            |                      |                |  |            |                   |
|------------|----------------------|----------------|--|------------|-------------------|
| Make:      | <b>Azimut</b>        | Class:         | <b>Flybridge</b>                               | Heads:     | <b>2</b>          |
| Model:     | <b>Flybridge 55</b>  | Hull Material: | <b>Fiberglass</b>                              | Fuel Type: | <b>Diesel</b>     |
| Year:      | <b>2019</b>          | Drive Type:    | <b>Direct Drive</b>                            | Max Draft: | <b>4 ft 11 in</b> |
| Length:    | <b>55 ft</b>         | Beam:          | <b>16 ft 1 in</b>                              |            |                   |
| Price:     | <b>US\$1,395,000</b> | Boat Location: | <b>Fort Lauderdale, Florida, United States</b> |            |                   |
| Condition: | <b>Used</b>          | Cabins:        | <b>3</b>                                       |            |                   |



**Manuel Ocampo | ROYAL MARINE YACHT GROUP**

3120 NW 99th Court, Miami, Florida, United States

Tel: **3056101031**

info@royalmarine.net

www.royalmarine.net

## Description

This 2019 Azimut 55 Fly is in excellent condition and has been maintained with an open checkbook since it was new. She has only **437 hours on the MAN 830hp motors** (straight shafts).

The yacht boasts **3 spacious staterooms, with separate crew quarters at the stern**. The large windows throughout and the spacious design provide numerous areas of enjoyment throughout the vessel. In the Benetti styled salon, you will find multiple lounge areas to relax (with storage underneath) and a pop-up flat screen + Bose Surround Cinema. You will feel the openness the magnificent windows provide throughout the salon, galley, and helm area. Behind the galley, you will find the full opening doors and windows toward the aft deck, equipped with a full dining table with twin chairs and a large U-Shaped couch. The flybridge, which has been upgraded with teak decking and isinglass enclosure, features a hardtop with a sliding Bimini top, a galley, grill for entertaining, multiple lounge areas, and unique marble tables. The flybridge is exceptionally spacious for the size of the vessel and is equipped with upgraded Raymarine AXIOM XL 16 screens, providing advanced navigation and control capabilities.

In addition to these upgrades, the boat is also equipped with a **Seakeeper stabilizer**, ensuring a smooth and stable cruising experience. It is further upgraded with a PFC INVERTER 5kW/2kW, providing efficient and reliable power management.

The bow has a large sun-pad and an electrical sunshade. Additionally, the forward and side decking have also been upgraded with teak. The yacht is equipped with a spacious hydraulic swim platform, Tracvision satellite, and other notable amenities. The tender, equipped with a 30hp Mercury outboard, is included in the sale.

**The boat is currently en-route to Fort Lauderdale, FL.**

## Information & Features

### MAN D2868LE (Engine 1)

|            |                |             |                     |
|------------|----------------|-------------|---------------------|
| Type:      | <b>Inboard</b> | Drive Type: | <b>Direct Drive</b> |
| Fuel Type: | <b>Diesel</b>  | Power:      | <b>830 hp</b>       |
| Hours:     | <b>437</b>     |             |                     |

### MAN D2868LE (Engine 2)

|            |                |             |                     |
|------------|----------------|-------------|---------------------|
| Type:      | <b>Inboard</b> | Drive Type: | <b>Direct Drive</b> |
| Fuel Type: | <b>Diesel</b>  | Power:      | <b>830 hp</b>       |
| Hours:     | <b>437</b>     |             |                     |

### Dimensions

|       |                   |            |                   |
|-------|-------------------|------------|-------------------|
| LOA:  | <b>55 ft 5 in</b> | Max Draft: | <b>4 ft 11 in</b> |
| LWL:  | <b>45 ft 4 in</b> |            |                   |
| Beam: | <b>16 ft 1 in</b> |            |                   |

### Weights

|             |                  |
|-------------|------------------|
| Dry Weight: | <b>63,934 lb</b> |
|-------------|------------------|

### Tanks

|              |                |
|--------------|----------------|
| Fuel:        | <b>676 gal</b> |
| Fresh Water: | <b>155 gal</b> |



## Accommodations

Cabins: **3**

Heads: **2**

## Other

Hull Shape: **Deep Vee**

Flag Of Registry: **United States**

Builder: **Azimut**

### Mechanical Disclaimer

Engine hours are as of the date of the original listing and are a representation of what the listing broker is told by the owner and/or actual reading of the engine hour meters. The broker cannot guarantee the true hours. It is the responsibility of the purchaser and/or his agent to verify engine hours, warranties implied or otherwise and major overhauls as well as all other representations noted on the listing brochure.

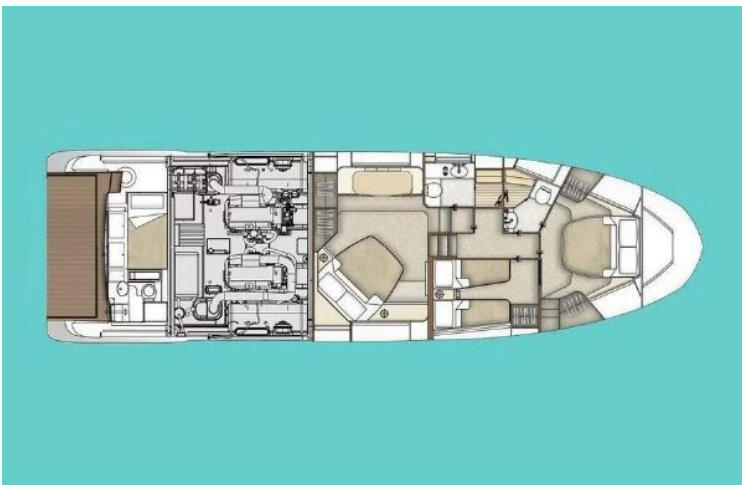
### Disclaimer

The company offers the details of this vessel in good faith but cannot guarantee or warrant the accuracy of this information nor warrant the condition of the vessel. A buyer should instruct his agents, or his surveyors, to investigate such details as the buyer desires validated. This vessel is offered subject to prior sale, price change or withdrawal without notice.









55 ft 2015 Prestige 550 Flybridge, No Patients  
**US\$973,800**

Bradenton, Florida, United States



### Boat Details

|            |                      |                |  |            |                   |
|------------|----------------------|----------------|--|------------|-------------------|
| Make:      | <b>Prestige</b>      | Class:         | <b>Flybridge</b>                         | Cabins:    | <b>4</b>          |
| Model:     | <b>550 Flybridge</b> | Hull Material: | <b>Fiberglass</b>                        | Heads:     | <b>3</b>          |
| Year:      | <b>2015</b>          | Drive Type:    | <b>Pod Drive</b>                         | Fuel Type: | <b>Diesel</b>     |
| Length:    | <b>55 ft</b>         | Beam:          | <b>15 ft 8 in</b>                        | Max Speed: | <b>30.2 kn</b>    |
| Price:     | <b>US\$973,800</b>   | Boat Location: | <b>Bradenton, Florida, United States</b> | Max Draft: | <b>3 ft 10 in</b> |
| Condition: | <b>Used</b>          | Name:          | <b>No Patients</b>                       |            |                   |



**Manuel Ocampo | ROYAL MARINE YACHT GROUP**

3120 NW 99th Court, Miami, Florida, United States

Tel: **3056101031**

[info@royalmarine.net](mailto:info@royalmarine.net)

[www.royalmarine.net](http://www.royalmarine.net)

## Description

### Explore Luxury on Water with this Unique 2015 Prestige 550 Flybridge Motor Yacht with Soft Top Bimini and Seakeeper 9

Unveil the epitome of luxury and innovation with our exceptional 2015 Prestige 550 Flybridge Motor Yacht, boasting a distinctive feature set that sets it apart from the rest. Crafted for discerning enthusiasts, this exquisite vessel offers a perfect blend of elegance, comfort, and performance, elevating your yachting experience to new heights.

#### Luxurious Design & Unmatched Comfort:

Step aboard and immerse yourself in a world of refined elegance. The interior of the Prestige 550 is a masterclass in luxury design, adorned with high-quality materials and meticulous craftsmanship. Indulge in the plush seating, spacious cabins, and lavish amenities that promise ultimate relaxation during your voyages.

#### Flybridge Freedom:

Ascend to the impressive flybridge, where breathtaking vistas and unparalleled freedom await. Equipped with soft top bimini, this open-air deck provides the perfect sanctuary for entertaining guests or enjoying serene sunsets with your loved ones. Revel in the sea breeze as you savor unobstructed views of the surrounding beauty.

#### Seakeeper 9 Stabilization System:

Experience tranquility like never before, thanks to the inclusion of the coveted Seakeeper 9 stabilization system. This cutting-edge technology ensures a remarkably smooth ride even in rough waters, reducing boat roll by up to 95%. Say goodbye to seasickness and embrace a stable, comfortable voyage every time you set sail.

#### Impressive Performance & Efficiency:

The 2015 Prestige 550 Flybridge Motor Yacht is powered by twin Cummins QSC 8.3 600 hp diesel engines, allowing you to cruise effortlessly through the waves. Whether embarking on thrilling adventures or leisurely cruises, this yacht delivers an exhilarating performance that's both reliable and economical.

#### Unrivaled Features & Amenities:

Every aspect of this vessel is thoughtfully designed to meet your every desire. From the fully equipped galley and state-of-the-art entertainment system to the indulgent master suite and well-appointed guest cabins, the Prestige 550 caters to all your needs and preferences.

#### Experience the Extraordinary:

As rare as it is captivating, this 2015 Prestige 550 Flybridge Motor Yacht with Seakeeper 9 and Tropical AC upgrade offers a once-in-a-lifetime opportunity to own a truly exceptional vessel. Make your dreams a reality and set sail on a remarkable journey of luxury, comfort, and adventure.

Don't miss the chance to own this extraordinary yacht – contact us today to schedule a private viewing and immerse yourself in the opulence that awaits on board the 2015 Prestige 550 Flybridge Motor Yacht.

## Information & Features

### Cummins QSC (Engine 1)

|            |                |             |                  |
|------------|----------------|-------------|------------------|
| Type:      | <b>Inboard</b> | Drive Type: | <b>Pod Drive</b> |
| Fuel Type: | <b>Diesel</b>  | Power:      | <b>600 hp</b>    |
| Hours:     | <b>645</b>     |             |                  |

## 2015 Cummins QSC 8.3 (Engine 2)

|            |                |             |                  |
|------------|----------------|-------------|------------------|
| Type:      | <b>Inboard</b> | Drive Type: | <b>Pod Drive</b> |
| Fuel Type: | <b>Diesel</b>  | Power:      | <b>600 hp</b>    |
| Hours:     | <b>645</b>     |             |                  |

### Dimensions

|            |                   |            |                   |
|------------|-------------------|------------|-------------------|
| LOA:       | <b>58 ft 9 in</b> | Max Draft: | <b>3 ft 10 in</b> |
| Beam:      | <b>15 ft 8 in</b> |            |                   |
| Min Draft: | <b>3 ft 1 in</b>  |            |                   |

### Weights

|             |                  |
|-------------|------------------|
| Dry Weight: | <b>39,022 lb</b> |
|-------------|------------------|

### Speed

|                 |                |
|-----------------|----------------|
| Cruising Speed: | <b>22.4 kn</b> |
| Max Speed:      | <b>30.2 kn</b> |
| Range:          | <b>284 nmi</b> |

### Tanks

|              |                |
|--------------|----------------|
| Fuel:        | <b>581 gal</b> |
| Fresh Water: | <b>211 gal</b> |
| Holding:     | <b>32 gal</b>  |

### Accommodations

|         |          |
|---------|----------|
| Cabins: | <b>4</b> |
| Heads:  | <b>3</b> |

### Other

|                   |                      |
|-------------------|----------------------|
| Flag Of Registry: | <b>United States</b> |
|-------------------|----------------------|

### Covers

- Bimini Top
- Cockpit Cover: Auto Retractable Shade

### Electrical Equipment

- Shore Power Inlet
- Generator
- Inverter

### Electronics

- Radar: Axiom 12 HD Digital Radar
- TV Set
- DVD Player
- Autopilot
- Radio
- Compass
- CD Player
- GPS: Raymarine GPS Multi-Function Display
- Cockpit Speakers: Bose Speaker System
- VHF: 260E VHF Dual



## **Inside Equipment**

- Seakeeper: Seakeeper 9
- Dishwasher: Edgeston
- Bow Thruster
- Washing Machine: Combo Wash/Dry
- Electric Bilge Pump
- Oven: Bosch Electric Glass Top
- Microwave Oven: Cuisinart
- Air Conditioning: Tropical AC 84/000 BTU
- Electric Head
- Hot Water
- Refrigerator
- Fresh Water Maker
- Deep Freezer

## **Outside Equipment/Extras**

- Teak Cockpit
- Teak Sidedecks
- Cockpit Cushions
- Cockpit Table
- Swimming Ladder

## Upgrades and Owner Improvements

Elevate your yachting experience with a curated selection of additional options and owner upgrades enhancing the 2015 Prestige 550 Flybridge Motor Yacht.

### ***Owner Improvements:***

- Updated Salon AC and VIP AC
- **NEW** Raymarine GPS Multi-Function Displays (2020)
- **NEW** Axiom 12 HD Digital Radar, 260E VHF Dual (2020)
- Raymarine (UAV) Drone technology connection
- Master Cabin Customized mattress
- New PropSpeed Paint (April 2023)
- Coating and Bottom Paint (April 2023)
- Window Blinds
- Customized additional overhead galley cabinet storage
- Exterior High Gloss Teak Tables
- New Bow Thruster Batteries (2022)
- New House Batteries (2021)
- New Bimini Top (2023)
- New Flybridge back seat cover (2023)
- New Helm Cover (2023)
- New Flybridge Cushions (2023)
- Engine Cooler Serviced (January 2022)
- A/C System Serviced
- New Engine Sea Cocks (April 2023)
- Newly Buffed and Waxed / Teak Cleaning Completed
- New Water Pump (2022)
- Lewmar Chain Stopper with Lever (2021)

### ***Upgrades:***

- Tropical AC 84/000 BTU
- Cushion for Front Sundeck
- New Helm Cover
- Bow Thruster
- 21.5Kw Genset
- Induction Counter-top 4-Burners
- Inverter 24V-115v 700w
- Bose Speaker System
- Wood Floor Salon + Carpet
- Glendinning Cablemaster
- Dock Water Inlet
- Custom Mattress in Master

- Luxury Bedspreads Set 3-Cabins
- Three (3) Exterior Docking Cameras
- Hydraulic Swim Platform 793 Lbs.

## Standard Features

The 2015 Prestige 550 Flybridge comes loaded with a host of standard features, ensuring a luxurious and seamless yachting experience. From the exquisitely designed interior to the advanced navigation system, every aspect of this vessel is crafted to exceed expectations.

### ***Standard Features Include:***

- Moabi Wood Interior
- Fabric Mediterranean Old White
- Windscreen Defogger
- Raymarine US Cartography
- Electric Windless
- Search Light
- Electric Trim Tabs
- Lift Raft Storage
- Stainless Steel Pulpit
- Flybridge Sundeck Mattress, Sink, Fridge, Grill
- Teak Cockpit Floor
- Teak on Aft Platform
- Wood on Fly Steps
- Swimming Platform Including Swim Ladder
- Hot & Cold Water Cockpit Shower
- Windows Blinds for All Windows
- Removable Carpet Set
- 3 Cabin 2 Heads
- Crew Quarters with Head

## Salon

Step into the inviting salon of the 2015 Prestige 550 Flybridge Motor Yacht, where luxurious comfort meets elegant design, creating an atmosphere of relaxation and social sophistication. Large windows bathe the space in natural light, providing panoramic views that complement the refined interior. Moabi wood cabinetry,

### **Features Include:**

- Wood flooring with removable carpet
- Port & starboard sofas – Mediterranean White
- 32" High/Low flat-screen TV
- Large salon windows
- Electric blinds for windows
- CD/MP3 player
- Bose speaker system
- Dinette Table with expandable top
- Vogue 34 carpeting
- Helm station with doublewide seat
- Dedicated reverse cycle Marine AC
- Central vacuum system
- 360° Panoramic view
- Ice maker
- Blue-ray player

## Galley

Nestled conveniently aft within the salon, the galley of the 2015 Prestige 550 Flybridge Motor Yacht is a culinary haven for aspiring chefs and gourmands alike. Boasting top-of-the-line appliances and ample countertop space, preparing gourmet meals becomes a pleasure while enjoying the company of your guests in the adjacent salon area and easy service to the cockpit through a rear entry door.

### **Features Include:**

- Bocsh 4 Burner electric induction glass stovetop
- Full Fridge and Freezer Stacked Unit
- Cuisinart Microwave/convection
- Edgestan Dishwasher
- Dish storage
- Corian countertops
- Sink with cover
- Abundant storage cabinets
- Additional custom hanging cabinet
- Beautiful Moabi wood cabinets
- Easy access to the cockpit area through dual entry sliding door

## Master Stateroom and Ensuite Head

Indulge in the opulent haven of the expansive master cabin aboard the 2015 Prestige 550 Flybridge Motor Yacht, offering a serene retreat that harmonizes modern luxury with ultimate relaxation. The ensuite head complements the experience, adorned with upscale amenities and meticulous attention to detail, ensuring a truly lavish escape.

### ***Master Stateroom Features Include:***

- Access via private stairway from the salon
- King-size island berth with owner-upgraded and customized mattress
- Side tables with drawers
- Very large hull windows – port & starboard
- Ensuite booth-style settee
- Integrated make-up mirror drawer with soft close
- Roman shades for side windows
- Carpeting – Vogue 34
- Walk-in closet with access to the walk-in shower
- Moabi wood cabinetry
- Lots of storage, hanging lockers
- Reading lights
- 40" Flatscreen TV with SAT Receiver
- Customized LED Headboard backlighting
- Electronic safe

### ***Master Ensuite Head Features Include:***

- Vessel style sink – white
- Corian countertops – black
- 110 Volt GFI outlet
- Vent fan
- Techma freshwater marine toilet
- Separate walk-through enclosed shower stall
- Stainless Steel Fixtures
- Privacy door
- Abundant storage

## VIP Guest Statements

Experience VIP treatment for your guests in the thoughtfully appointed staterooms of the 2015 Prestige 550 Flybridge Motor Yacht, where elegance and comfort intertwine to offer a lavish haven that rivals the finest boutique hotels. Each stateroom exudes luxury and provides a tranquil escape, ensuring your guests feel pampered throughout their journey.

### ***Forward VIP Stateroom Features Include:***

- Scissor berth – Queen size or twin berths
- Large side windows with shades
- Split berth arrangement opens room-up
- Dedicated marine AC with control
- Hanging locker
- Overhead hatch with shade and screen
- Flat screen TV with SAT Receiver
- Reading lights
- 110 Volt GFCI outlet
- Privacy door
- Private entry to the guest head (ensuite)

### ***Portside Guest Stateroom Features Include:***

- Twin berths – side by side
- Reading light
- Privacy door standing headroom
- Hanging locker
- Large side window with shade
- Flatscreen TV with SAT Receiver
- Air-conditioned/heated

## Helm Stations

Experience seamless navigation and control from both the lower and upper helm stations of the 2015 Prestige 550 Flybridge Motor Yacht, ensuring operational flexibility and panoramic views for a confident journey.

### ***Lower Helm Features Include:***

- Double-wide helm seat with footstool
- Steering wheel
- Electronic binnacle controls
- Cummins Zeus Joystick
- New Twin Raymarine GPS Multi-Functional Displays (2020)
- New Raymarine Axiom 12 HD Digital Radar
- Raymarine Depth Finder
- Seakeeper 9 Control Panel
- Raymarine Autopilot
- Quick Chain Counter
- Raymarine VHF radio

### ***Upper Flybridge Helm Features***

- Double-wide helm seat
- Steering wheel
- Electronic binnacle controls
- Cummins Zeus joystick
- Single New Raymarine Chartplotter/Radar/Sonar (2020)
- Raymarine Autopilot
- Raymarine VHF radio
- Compass
- Helm cover

## Electronics and Mechanical Systems

The 2015 Prestige 550 Flybridge Motor Yacht boasts a cutting-edge array of electronic and mechanical systems, meticulously designed to ensure optimal performance and safety throughout every voyage. From advanced navigation technology to reliable propulsion systems, this yacht offers a harmonious blend of innovation and reliability for an unparalleled yachting experience.

- SeaKeeper 9
- Upgraded Tropical AC 84,000 BTU
- Three Exterior Camera System (Stern, Port, Starboard)
- Stern Security Camera
- Flybridge with LED Lighting
- Underwater Hull Lights
- Upgrade Inverter 24 115V60H 2500W
- 50amp shore power system
- 110/220 Volt AC system
- 12/24 volt DC system
- Hydraulic Swim Platform 793 Lbs
- Washer/dryer combo
- Central vacuum system
- Tropical AC system -84,000 BTU
- Icemaker 110V/60Hz
- Chilled water AC system
- Bow thruster
- Overboard discharge macerator
- Windlass for anchor
- Trim tabs
- Spotlight
- Glendinning cable master system
- Electronic Safe
- Retractable Sun Awning Cockpit
- Electric Sea Pump Deck Washing

## Disclaimer

The Company offers the details of this vessel in good faith but cannot guarantee or warrant the accuracy of this information nor warrant the condition of the vessel. A buyer should instruct his agents, or his surveyors, to investigate such details as the buyer desires validated. Hours listed may vary from actual hours due to recent use. Purchaser is encouraged to verify hours prior to purchase. This vessel is offered subject to prior sale, price change, or withdrawal without notice.





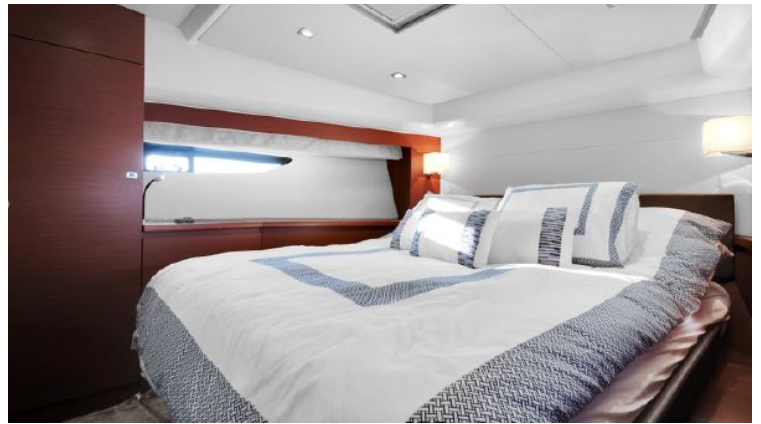
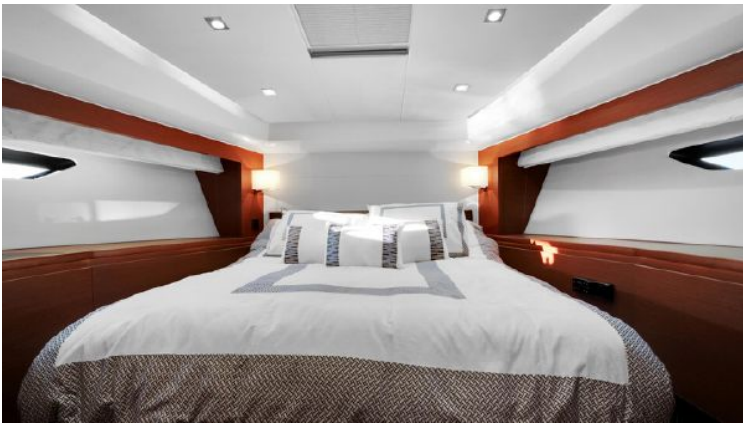
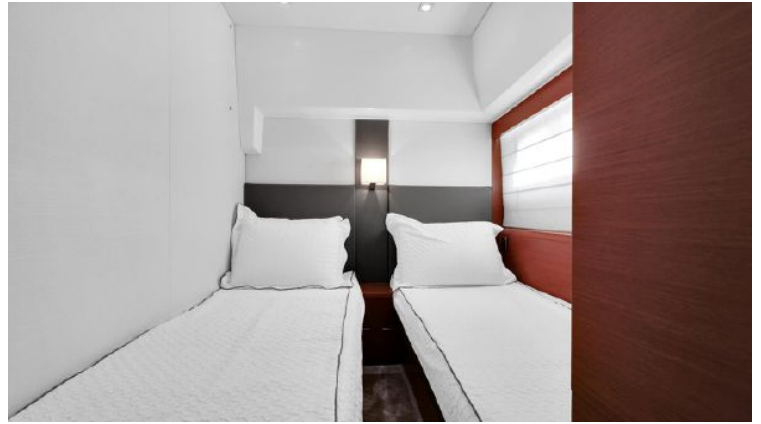


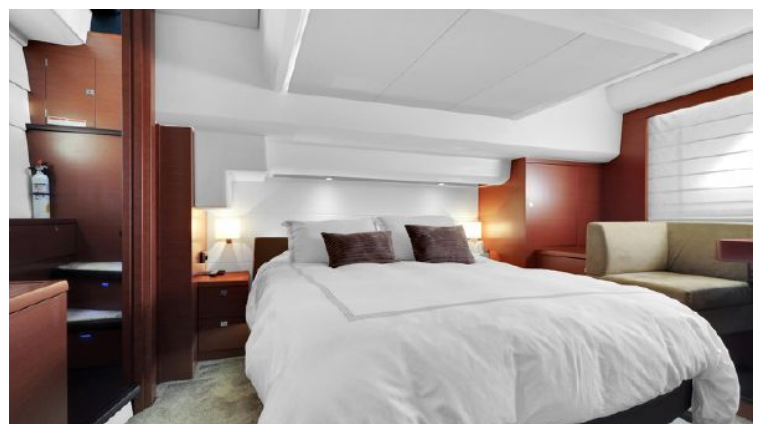
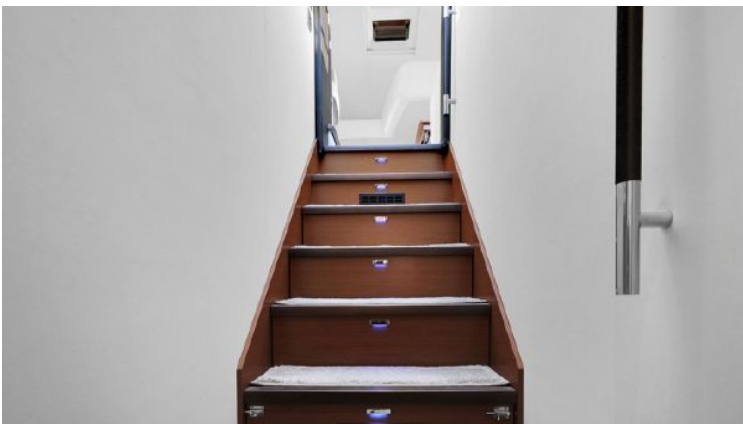




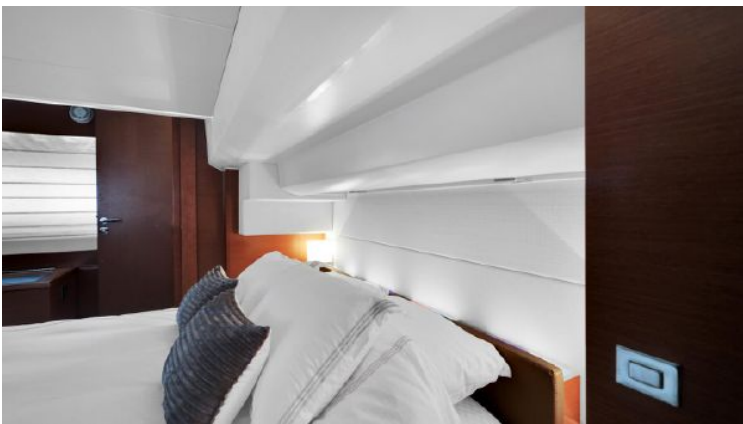
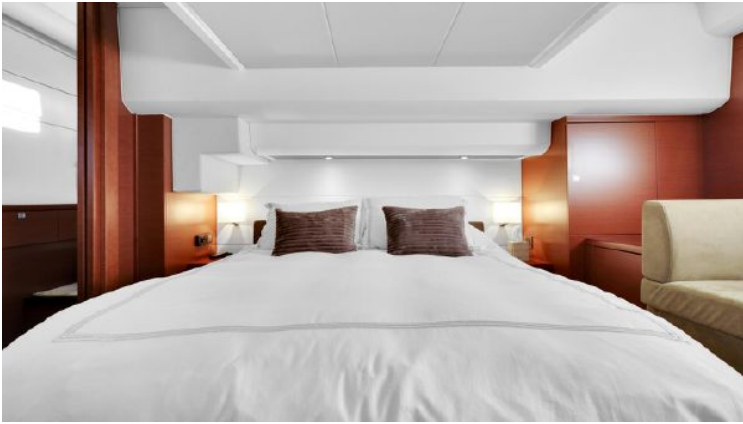


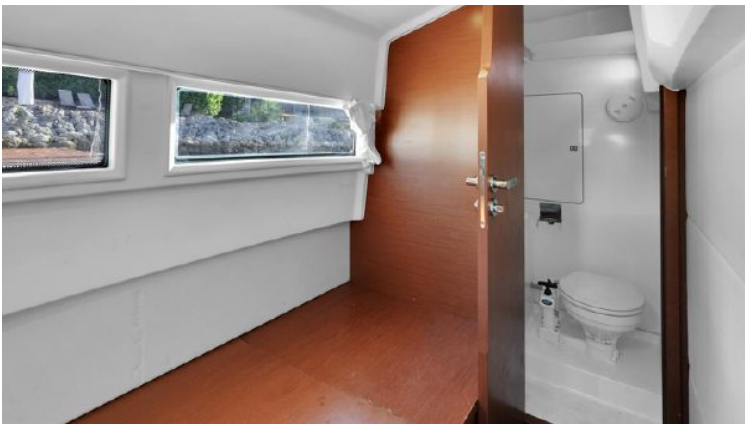














55 ft 2018 Sea Ray L550 Fly, Guns Up

**US\$1,297,000**

Pompano Beach, Florida, United States



**Boat Details**

|            |                      |                |  |            |               |
|------------|----------------------|----------------|--|------------|---------------|
| Make:      | <b>Sea Ray</b>       | Class:         | <b>Motor Yacht</b>                           | Heads:     | <b>2</b>      |
| Model:     | <b>L550 Fly</b>      | Hull Material: | <b>Fiberglass</b>                            | Fuel Type: | <b>Diesel</b> |
| Year:      | <b>2018</b>          | Beam:          | <b>15 ft 7 in</b>                            | Max Speed: | <b>27 kn</b>  |
| Length:    | <b>55 ft</b>         | Boat Location: | <b>Pompano Beach, Florida, United States</b> |            |               |
| Price:     | <b>US\$1,297,000</b> | Name:          | <b>Guns Up</b>                               |            |               |
| Condition: | <b>Used</b>          | Cabins:        | <b>3</b>                                     |            |               |



**Manuel Ocampo | ROYAL MARINE YACHT GROUP**

3120 NW 99th Court, Miami, Florida, United States

Tel: **3056101031**

info@royalmarine.net

www.royalmarine.net

## Description

- Main Engine Hours: 477 Hours
- Generator Hours: 612 Hours
- Caterpillar 12.9L: Straight Inboards
- 29 KW ONAN Generator
- Glendenning Controls
- Joy Stick Docking System: With Bow & Stern Thruster: Additional 3rd Joy Stick Docking Station
  - Controls in cockpit, pilothouse and bridge
- Upgrade 820 Gallon Diesel Fuel Tanks: (2)
- Caterpillar Touchscreen Smart Display For Engine Performance Metrics: (2)
- Seastar Power Assisted Steering
- Cell Antenna Data Installation: (Independent WiFi network)
- Custom Mounted Flybridge TV (55' Samsung TV) With Sat. TV
- KVH HD7 Antenna
- Sea Recovery Watermaker
- Reverso Oil Change system (Engines, Transmissions, Generator)
- Swim Platform Extension with Stairs
- Underwater Lighting (Ocean LED) (Blue) (4)
- Two Stidd Hem Chairs
- Salon sofa with pull out bed
- Raymarine GS165 Chartplotters (4 Units Total) (Pilothouse & Flybridge)
- Raymarine Autopilot
- Raymarine RMK10 multifunction display: (2)
- Raymarine VHF: (2)
- Raymarine Network Cameras (Cockpit & Engine Room)
- ACR Pointpad URP-102 searchlight remote: (2)

## Information & Features

### Caterpillar C12.9 (Engine 1)

Fuel Type: Diesel  
Hours: 477  
Power: 838 hp

### Caterpillar C12.9 (Engine 2)

Fuel Type: Diesel  
Hours: 477  
Power: 838 hp

## Dimensions

|            |                   |
|------------|-------------------|
| LOA:       | <b>55 ft</b>      |
| Beam:      | <b>15 ft 7 in</b> |
| Min Draft: | <b>4 ft 10 in</b> |

## Speed

|                 |              |
|-----------------|--------------|
| Cruising Speed: | <b>24 kn</b> |
| Max Speed:      | <b>27 kn</b> |

## Tanks

|              |                |
|--------------|----------------|
| Fuel:        | <b>820 gal</b> |
| Fresh Water: | <b>150 gal</b> |
| Holding:     | <b>60 gal</b>  |

## Accommodations

|         |          |
|---------|----------|
| Cabins: | <b>3</b> |
| Heads:  | <b>2</b> |

## Electrical Equipment

- Shore Power Inlet
- Generator: Onan 29KW 612 hours

## Electronics

- Depthsounder
- Radar
- TV Set
- Plotter
- Autopilot
- Radio
- Compass
- GPS
- Cockpit Speakers
- VHF

## Inside Equipment

- Stern Thruster
- Bow Thruster
- Washing Machine
- Electric Bilge Pump
- Oven
- Microwave Oven
- Air Compressor
- Marine Head
- Air Conditioning
- Electric Head
- Hot Water
- Refrigerator
- Fresh Water Maker
- Battery Charger

## Outside Equipment/Extras

- Cockpit Shower
- Cockpit Cushions
- Cockpit Table
- Swimming Ladder

## Disclaimer

The Company offers the details of this vessel in good faith but cannot guarantee or warrant the accuracy of this information nor warrant the condition of the vessel. A buyer should instruct his agents, or his surveyors, to investigate such details as the buyer desires validated. This vessel is offered subject to prior sale, price change, or withdrawal without notice.













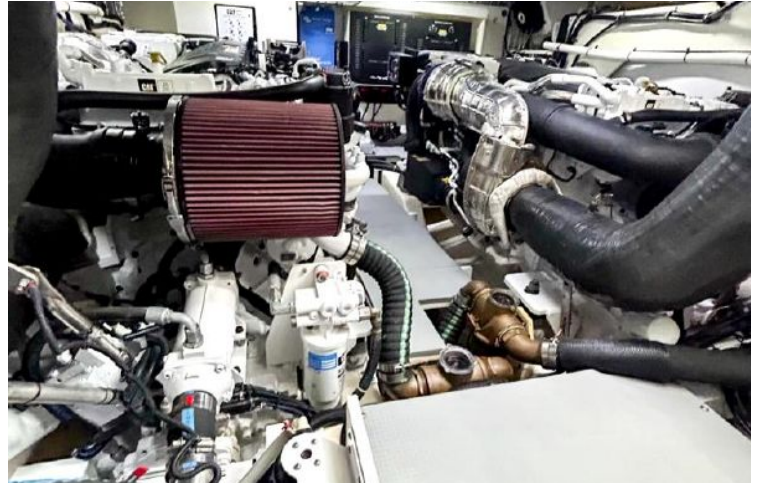












# 56 ft 2015 Princess Flybridge 56 Motor Yacht

**US\$1,400,000**

Lighthouse Point, Florida, United States



## Boat Details

|            |                                 |                |   |            |                  |
|------------|---------------------------------|----------------|---|------------|------------------|
| Make:      | <b>Princess</b>                 | Class:         | <b>Motor Yacht</b>                              | Heads:     | <b>2</b>         |
| Model:     | <b>Flybridge 56 Motor Yacht</b> | Hull Material: | <b>Fiberglass</b>                               | Fuel Type: | <b>Diesel</b>    |
| Year:      | <b>2015</b>                     | Drive Type:    | <b>Direct Drive</b>                             | Max Speed: | <b>31 kn</b>     |
| Length:    | <b>56 ft</b>                    | Beam:          | <b>15 ft 7 in</b>                               | Max Draft: | <b>4 ft 3 in</b> |
| Price:     | <b>US\$1,400,000</b>            | Boat Location: | <b>Lighthouse Point, Florida, United States</b> |            |                  |
| Condition: | <b>Used</b>                     | Cabins:        | <b>3</b>  |            |                  |



**Manuel Ocampo | ROYAL MARINE YACHT GROUP**

3120 NW 99th Court, Miami, Florida, United States

Tel: **3056101031**

[info@royalmarine.net](mailto:info@royalmarine.net)

[www.royalmarine.net](http://www.royalmarine.net)

## Description

New to the Market, photos and video coming soon.

## Information & Features

### MAN R6 D2876LE426 (Engine 1)

|            |                |             |                     |
|------------|----------------|-------------|---------------------|
| Type:      | <b>Inboard</b> | Drive Type: | <b>Direct Drive</b> |
| Fuel Type: | <b>Diesel</b>  | Power:      | <b>800 hp</b>       |
| Hours:     | <b>600</b>     |             |                     |

### MAN R6 D2876LE426 (Engine 2)

|            |                |             |                     |
|------------|----------------|-------------|---------------------|
| Type:      | <b>Inboard</b> | Drive Type: | <b>Direct Drive</b> |
| Fuel Type: | <b>Diesel</b>  | Power:      | <b>800 hp</b>       |
| Hours:     | <b>600</b>     |             |                     |

### Dimensions

|            |                   |
|------------|-------------------|
| LOA:       | <b>59 ft 5 in</b> |
| Beam:      | <b>15 ft 7 in</b> |
| Max Draft: | <b>4 ft 3 in</b>  |

### Weights

|             |                  |
|-------------|------------------|
| Dry Weight: | <b>57,700 lb</b> |
|-------------|------------------|

### Speed

|                 |              |
|-----------------|--------------|
| Cruising Speed: | <b>26 kn</b> |
| Max Speed:      | <b>31 kn</b> |

### Tanks

|              |                |
|--------------|----------------|
| Fuel:        | <b>582 gal</b> |
| Fresh Water: | <b>130 gal</b> |

### Accommodations

|         |          |
|---------|----------|
| Cabins: | <b>3</b> |
| Heads:  | <b>2</b> |

### Electrical Equipment

- Shore Power Inlet
- Generator: 830 hrs

## Electronics

- Depthsounder
- Radar
- Log-Speedometer
- TV Set
- Navigation Center
- Plotter
- Autopilot
- Radio
- Compass
- GPS
- Cockpit Speakers
- VHF

## Inside Equipment

- Stern Thruster
- Bow Thruster
- Microwave Oven
- Marine Head
- Air Conditioning
- Refrigerator
- Battery Charger

## Outside Equipment/Extras

- Teak Cockpit
- Cockpit Table

## Manufacturer Provided Description

Teak-laid steps lead up from the bathing platform to the expansive cockpit, with its dining table and generous u-shaped seating. You and your guests can also enjoy socialising and relaxing on the spacious flybridge, where further seating surrounds a second alfresco table. And for those who really want to unwind, the helm companion seat can easily be converted into a sunbed.

The stylish main saloon is bright and airy with large wraparound windows, creating an exceptional feeling of space. The open-plan arrangement, featuring u-shaped seating, separate raised dining area and well-equipped galley, ensures a highly sociable layout.

The lower accommodation comprises three beautifully appointed cabins, including the luxurious full beam master stateroom, a spacious forward guest cabin, both with generous en-suites, and a twin cabin. You can also specify an optional single aft cabin with its own WC, for crew or occasional guests if required.

## Deck

- Teak-laid transom platform, cockpit deck, flybridge stairway and stairs to side decks
- Reversible electric anchor winch with foredeck, main helm and flybridge controls
- Self stowing 25kg/55lb Delta anchor with 40m of chain
- Stemhead roller with automatic anchor launch and retrieve
- Stainless-steel bow, stern and spring cleats
- Stainless-steel bow fairleads
- Stainless-steel pulpit and guard rails
- Stainless-steel coachroof and flybridge rails
- PVC rubbing band with stainless-steel insert
- Foredeck hatch
- Full set of IMCO navigation lights
- Riding light
- Twin beam searchlight with dual-station remote controls
- Twin electric horns
- Fuel and water fillers

## Cockpit

- Self-draining
- U-shaped seating with teak table
- Lockable access hatch to engine room and lazarette
- Steps to side decks
- Cockpit lighting
- Transom gate leading to bathing platform
- Side lockers
- Fender storage
- 220/240v shore support inlet
- Stainless-steel handrails
- Locker containing remote fuel cocks, manual bilge pump with valve chest and manual controls for automatic fire extinguishers
- Integral stairway to flybridge with teak treads
- Teak-laid transom bathing platform with foldaway swimming ladder, hot and cold shower
- Dinghy chock system
- Electro-hydraulic raise/lower mechanism for transom platform (suitable for a tender up to 400kgs) is optionally available

## Accommodations

### Deck Saloon

- Triple stainless-steel framed sliding doors to cockpit
- U-shaped sofa with coffee table
- Two-seater sofa to port
- 46" LED TV with electric raise/lower mechanism
- Sideboard units with refrigerator, bottle and glass storage and radio/MP3
- Dining area with U-shaped seating and 2 additional stools (to seat 6 in total)

### OWNER'S STATEROOM

- Large double bed with drawers below
- Wardrobe with shelves
- Dressing table
- Sofa
- Stereo radio, MP3
- Overhead and individual berth lights
- En suite bathroom

### FORWARD GUEST CABIN

- Large double bed with drawers below
- Wardrobe with shelves
- Vanity unit
- Storage lockers and drawers
- Overhead and individual berth lights
- Deck hatch with fly screen and blind
- En suite bathroom with day access

### STARBOARD GUEST CABIN

- Two full-size single beds
- Wardrobe with shelf
- Storage lockers
- Overhead and individual berth lights

### OPTIONAL AFT CABIN

- Single berth
- Storage space
- Overhead and individual berth lights
- Electric quietflush toilet and washbasin

## Galley

- 3-zone ceramic hob
- Hob extractor
- Combination microwave/conventional oven with grill
- Stainless-steel sink with monobloc mixer tap
- Refrigerator with freezer compartment
- Waste bin
- Chopping board
- Provision for dishwasher and additional refrigerator

## Power and Drive Systems

- 4-bladed Veem Interceptor propellers
- Bow thruster
- Stern thruster
- Power-assisted electro-hydraulic steering system with hydraulic back-up
- Electronic engine and gear shift controls
- Dripless shaft seals
- Engine room extractor fan with electronic time delay

## Electrical

### 24 Volt

- 4 x heavy duty batteries for engine starting
- 4 x heavy duty auxiliary batteries
- 60 amp battery charger charges both banks of batteries via an automatic switch charging system
- Remote battery master switches with control switch at main panel
- LED lighting throughout

### 220/240 Volt

- 13.5kW Onan diesel generator in own sound shield with water cooled specially silenced exhaust
- Polarity check system
- Earth leakage safety trip
- Power points in all areas

## Flybridge

- Dual station instrument controls (see Lower Helm Position)
- Visible and audible engine warning system
- Bilge pump audible alarm
- Twin helm seats
- Forward facing L-shaped seat which converts to sunbed
- U-shaped seating area with teak table
- Wetbar with sink and electric barbecue
- Refrigerated coolbox
- Loudspeakers linked to saloon stereo
- Integral stairway from aft cockpit with clear view hatch
- Wind deflector screen
- Stainless-steel handrails
- GRP radar arch
- Console and seat covers
- Matched whip aerials for VHF R/T and radio

## Lower Helm Position

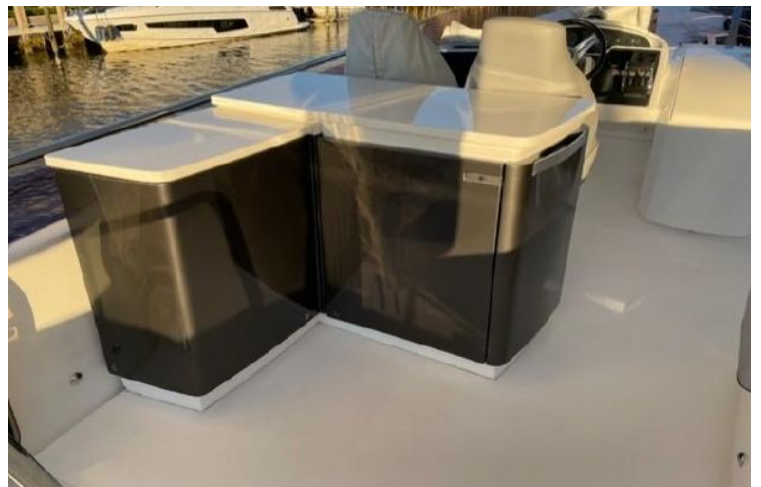
- Twin helm seats with fore and aft adjustment for helmsman
- Electric opening windows at helm position and port side
- Full engine instrumentation including fuel gauges, exhaust temperature and engine warning system and rudder position indicator
- Navigation system including VHF/RT, speed and distance log, echo sounder with alarm, autopilot and high speed magnetic compass
- Controls for bow thruster, windscreen wipers, bilge pump and trim tabs (with indicator)
- Chart table with light and chart stowage
- 12v outlet
- Red night lighting
- 24v and 220/240v electrical control panels

## Disclaimer

The Company offers the details of this vessel in good faith but cannot guarantee or warrant the accuracy of this information nor warrant the condition of the vessel. A buyer should instruct his agents, or his surveyors, to investigate such details as the buyer desires validated. This vessel is offered subject to prior sale, price change, or withdrawal without notice.











56 ft 2011 Maritimo M56  
**US\$1,195,000**  
 Fort Lauderdale, Florida, United States



**Boat Details**

|            |                      |                |  |            |               |
|------------|----------------------|----------------|--|------------|---------------|
| Make:      | <b>Maritimo</b>      | Class:         | <b>Flybridge</b>                               | Heads:     | <b>2</b>      |
| Model:     | <b>M56</b>           | Hull Material: | <b>Fiberglass</b>                              | Fuel Type: | <b>Diesel</b> |
| Year:      | <b>2011</b>          | Drive Type:    | <b>Direct Drive</b>                            |            |               |
| Length:    | <b>56 ft</b>         | Beam:          | <b>17 ft 1 in</b>                              |            |               |
| Price:     | <b>US\$1,195,000</b> | Boat Location: | <b>Fort Lauderdale, Florida, United States</b> |            |               |
| Condition: | <b>Used</b>          | Cabins:        | <b>3</b>                                       |            |               |



**Manuel Ocampo | ROYAL MARINE YACHT GROUP**

3120 NW 99th Court, Miami, Florida, United States

Tel: **3056101031**

[info@royalmarine.net](mailto:info@royalmarine.net)

[www.royalmarine.net](http://www.royalmarine.net)

## Description

One of the best equipped and well kept Maritimo M56 comes to the market!

One of Maritimo's most thought after model has all the highest quality equipment for an easy owner operation: Upgraded Volvo D-13-900's with over 1000 gallons of fuel capacity, joystick for comfortable docking by tying in your hydraulic bow and stern thrusters with the engine transmissions. Factory installed Seakeeper Gyro. Watermaker, Hydraulic Swimplatform and many other options.

The owner has not spared any expense on his last two years of ownership and the boat has recently received mayor upgrades like:

- New Steelhead Davit on bow
- Underwater Lights
- New Ice Maker
- New Seawater Pump
- Generator Service & Spare Parts
- Water Maker Re-Furb
- New Grey Water Pump
- New Macerator Pump
- New Condensate Pump
- New Mastervolt charger
- New Vacuum & Hose
- New A/C Unit – VIP
- New A/C Unit – Salon
- New A/C Unit – Bridge & Pump
- New Anchor Chain & Gypsy
- Chain Locker – New Gel Coat
- New Batteries & Cables
- Bow & Stern Thruster Service
- Fresh Bottom Paint
- Glen Dinning Rebuilt
- New Shore Power Cord
- New 3 Blade Pantographic Wiper System
- Seakeeper Service
- New Sani-split Unit
- New Windows (bridge & Salon), gelcoat repairs, Ceramic Coating
- New Flooring Throughout, bedspreads etc

This unique Maritimo shows fantastic and runs beautifully.

## Information & Features

## 2011 Volvo D13 (Engine 1)

Type: **Inboard**  
Fuel Type: **Diesel**  
Hours: **2032**

Drive Type: **Direct Drive**  
Power: **900 hp**  
Propeller Type: **4 Blade**

## 2011 Volvo D13 (Engine 2)

Type: **Inboard**  
Fuel Type: **Diesel**  
Hours: **2032**

Drive Type: **Direct Drive**  
Power: **900 hp**  
Propeller Type: **4 Blade**

## Dimensions

LOA: **60 ft 1 in**  
Beam: **17 ft 1 in**  
Min Draft: **4 ft 5 in**

## Tanks

Fuel: **1,017 gal**  
Fresh Water: **211 gal**  
Holding: **79 gal**

## Accommodations

Cabins: **3**  
Heads: **2**

## Other

Hull Shape: **Modified Vee**  
Flag Of Registry: **United States**  
Builder: **Maritimo**

## Electrical Equipment

- Shore Power Inlet
- Generator
- Inverter

## Electronics

- Depthsounder
- Radar
- Log-Speedometer
- Repeater(s)
- TV Set
- Navigation Center
- Plotter
- DVD Player
- Autopilot
- Compass
- GPS
- Cockpit Speakers
- VHF

### **Inside Equipment**

- Seakeeper
- Stern Thruster
- Dishwasher
- Bow Thruster
- Washing Machine
- Electric Bilge Pump
- Microwave Oven
- Air Conditioning
- Electric Head
- Hot Water
- Refrigerator
- Fresh Water Maker
- Deep Freezer
- Sea Water Pump
- Battery Charger

### **Outside Equipment/Extras**

- Cockpit Shower
- Davit(s): Steelhead

### **Disclaimer**

The Company offers the details of this vessel in good faith but cannot guarantee or warrant the accuracy of this information nor warrant the condition of the vessel. A buyer should instruct his agents, or his surveyors, to investigate such details as the buyer desires validated. This vessel is offered subject to prior sale, price change, or withdrawal without notice.







